

TABLE OF CONTENT

FUNDAMENTALS 1

GATHER
COLLOQUY
CONTAIN
PLACE

FUNDAMENTALS 2

CLIFF DWELLING

DESIGN 1

A PAVILION FOR CITY AND NATURE

DESIGN 2

CHARRETTE 1
CHARRETTE 2
THE VIRUS
CHARRETTE 3
CHARRETTE 4
THE PROSTHESIS

DESIGN 3

WARM-UP 1 A/B
PRECEDENT STUDY
SITE ANALYSIS
THE POLICE STATION

VISUALIZATION 1

PROJECT B
PROJECT C

VISUALIZATION 2

FISCHER HOUSE

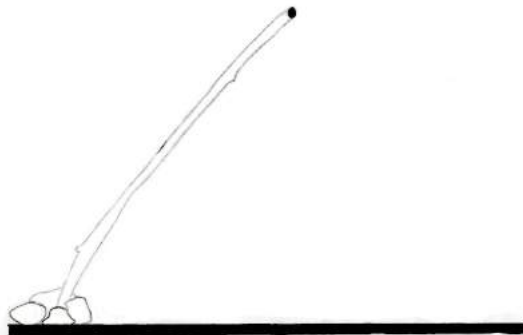
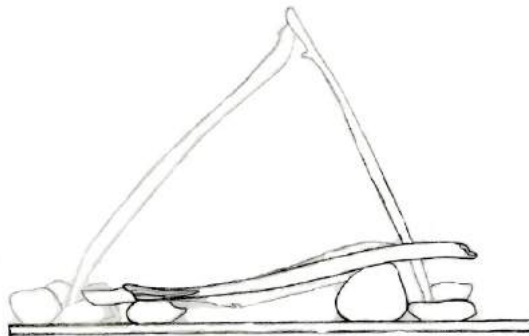
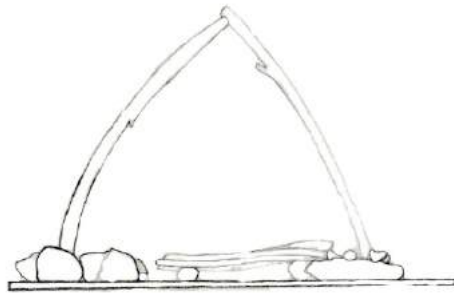
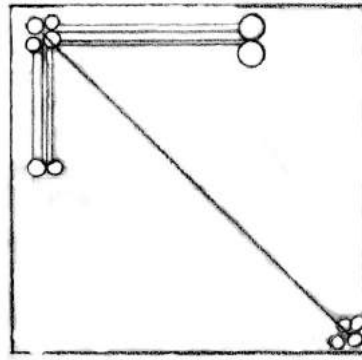
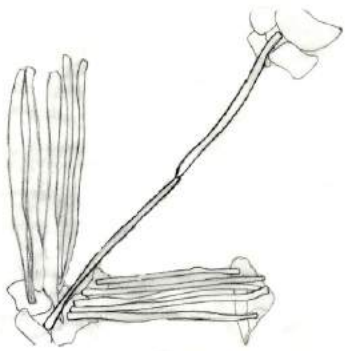
VISUALIZATION 3

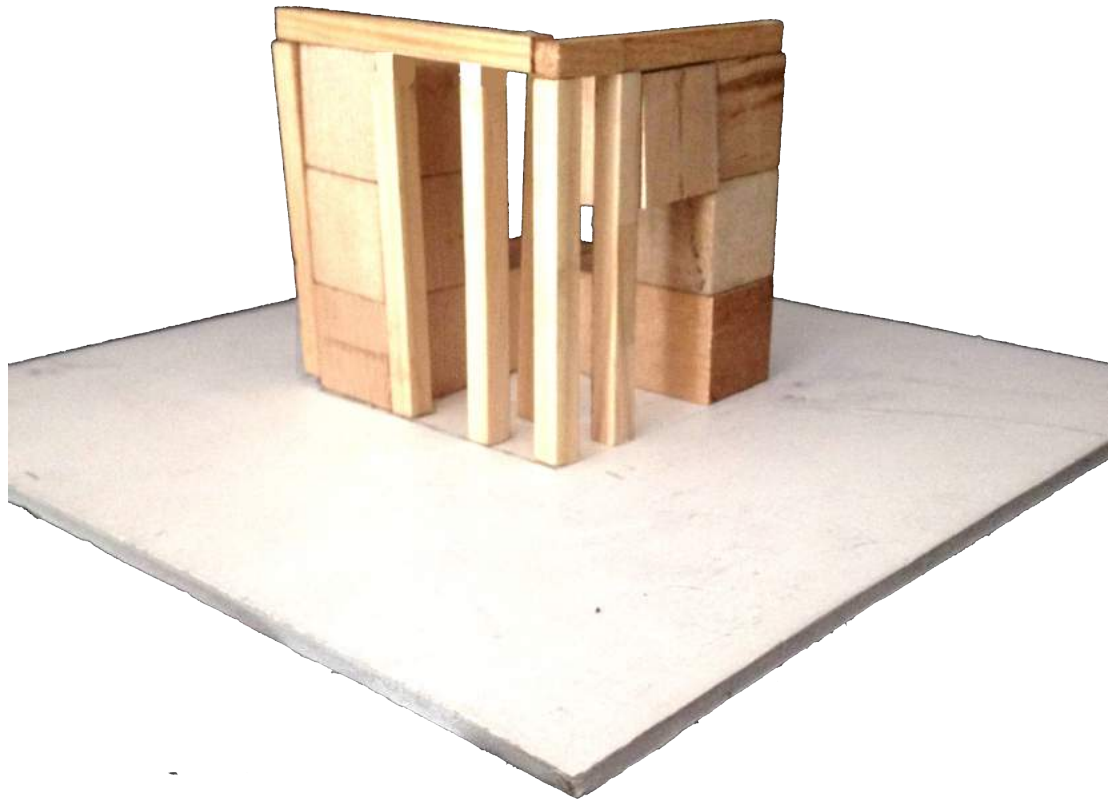
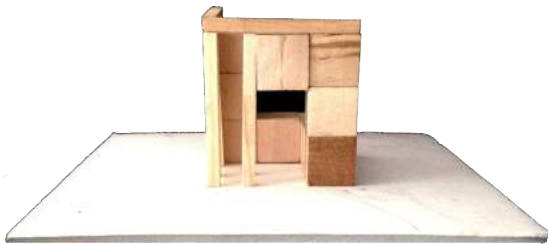
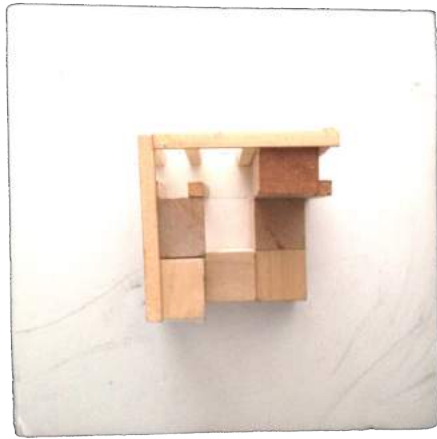
J HOUSE



Gather

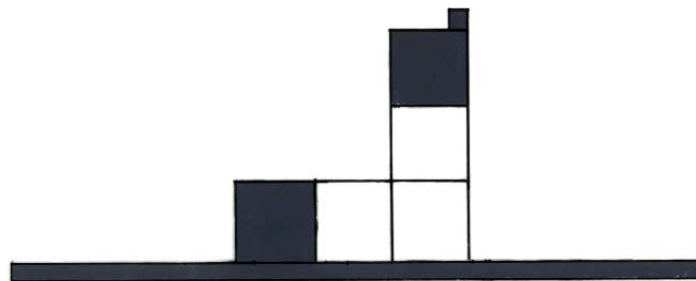
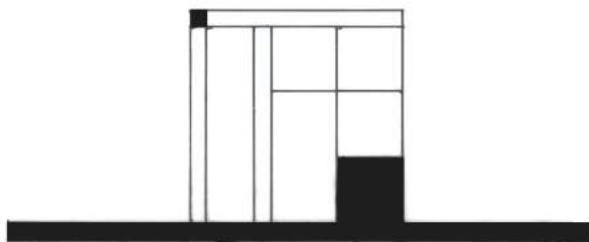
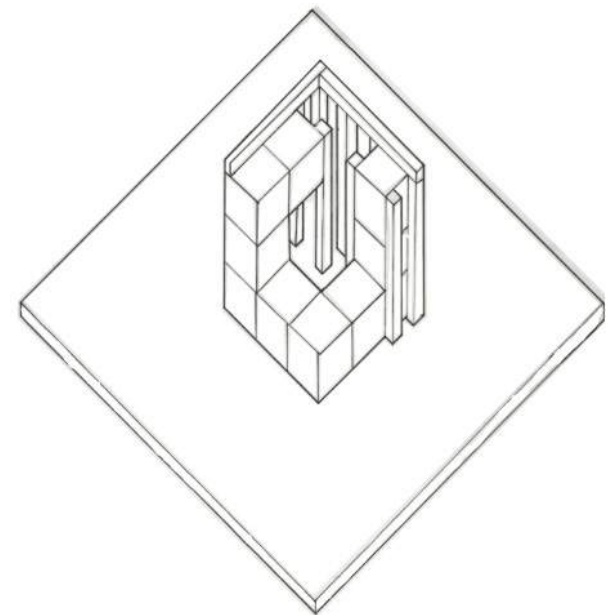
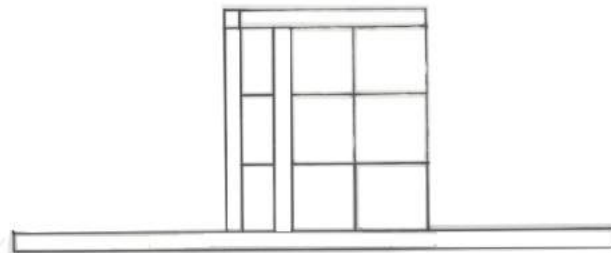
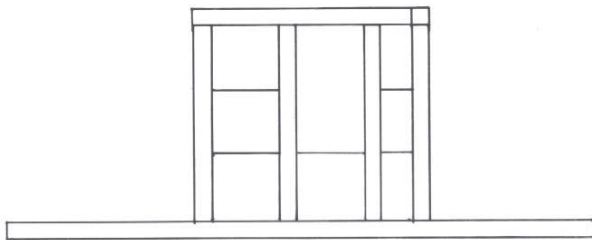
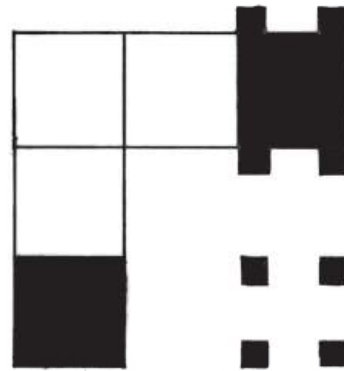
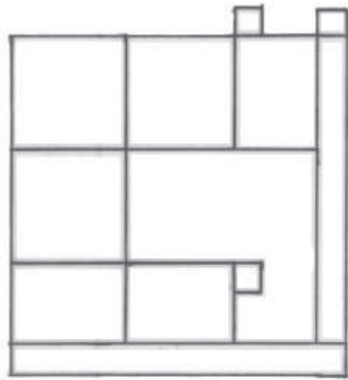
Students were required to make a structure out of sticks and stones. My approach was to define space by having two masses on either corners of the site and having the two diagonal sticks in the center tie both masses together.



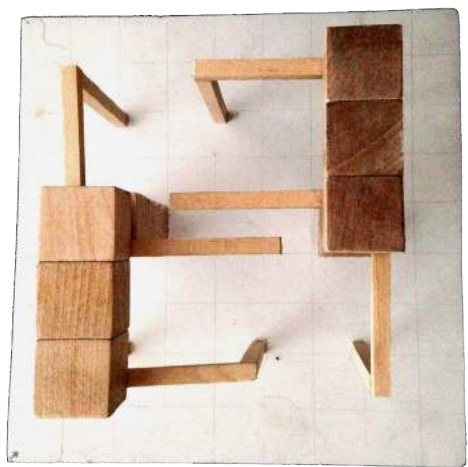


Colloquy

My approach in making the cube was to have the dimension of the cube implied by the individual cubes and the rods.

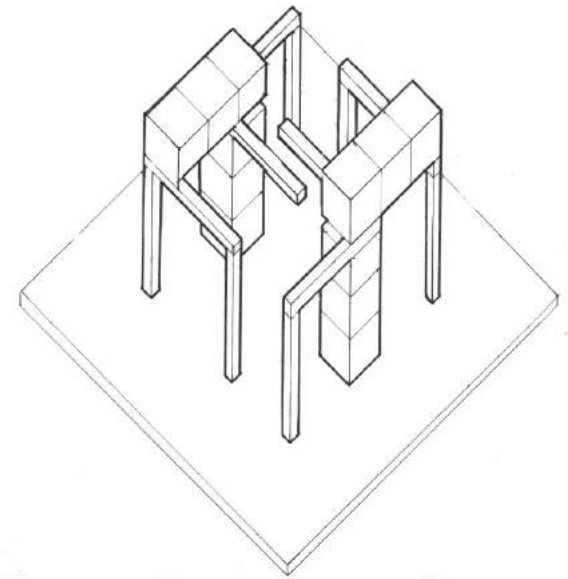
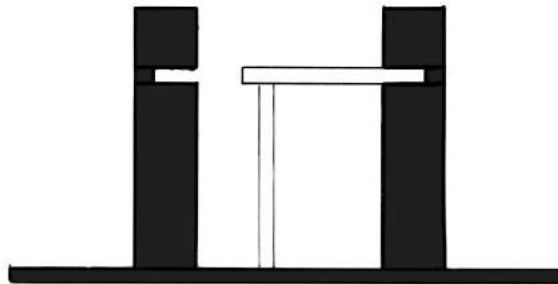
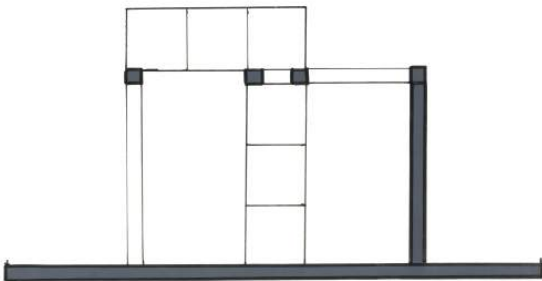
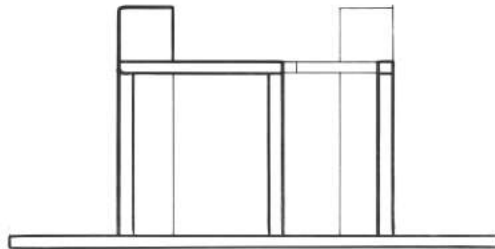
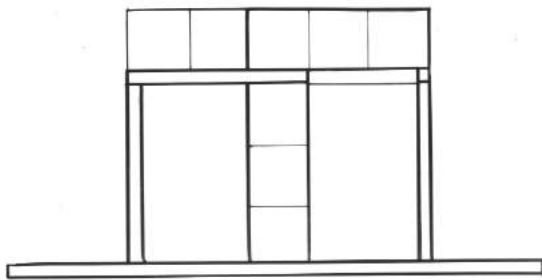
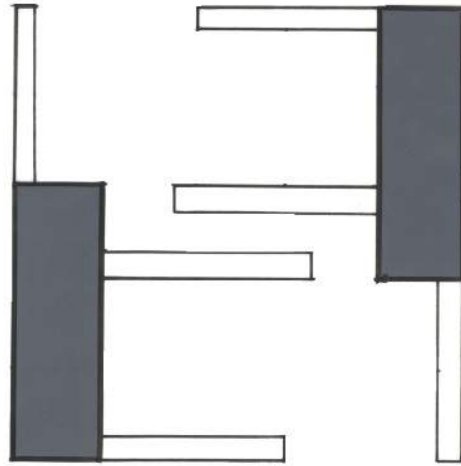
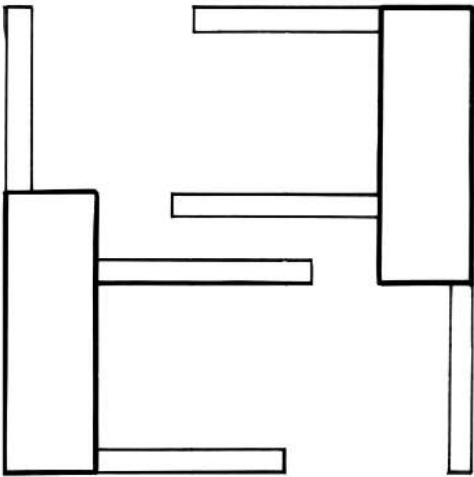


Plans, elevations, and sections.

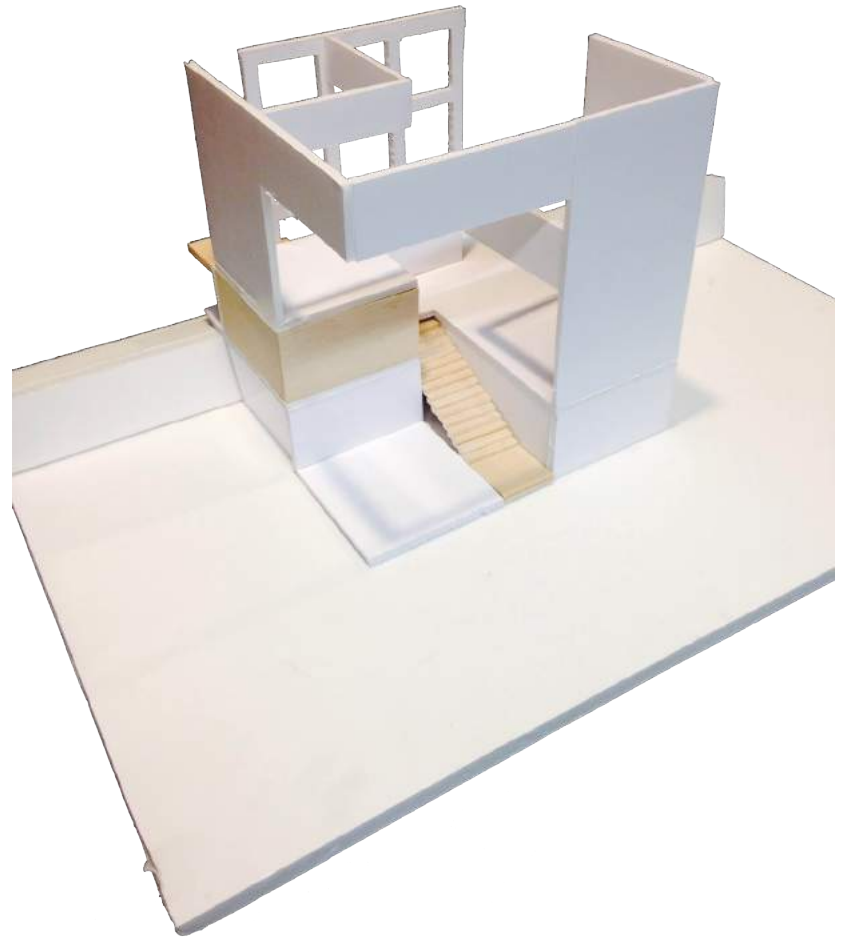
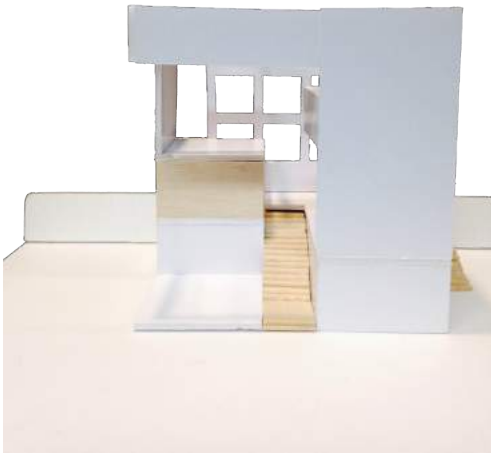
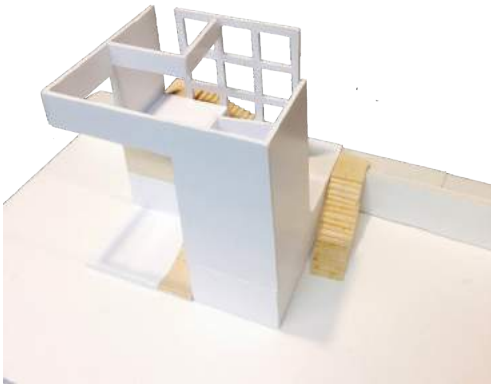
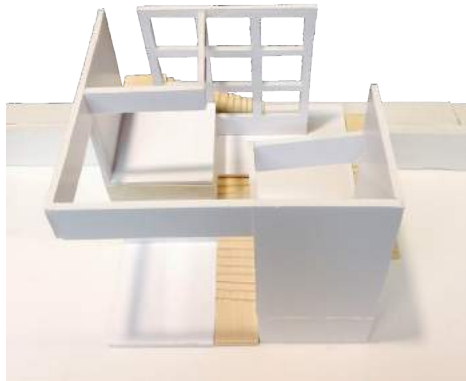


Contain

My approach in making this model was to make two identical masses on either corner to help define different spaces.

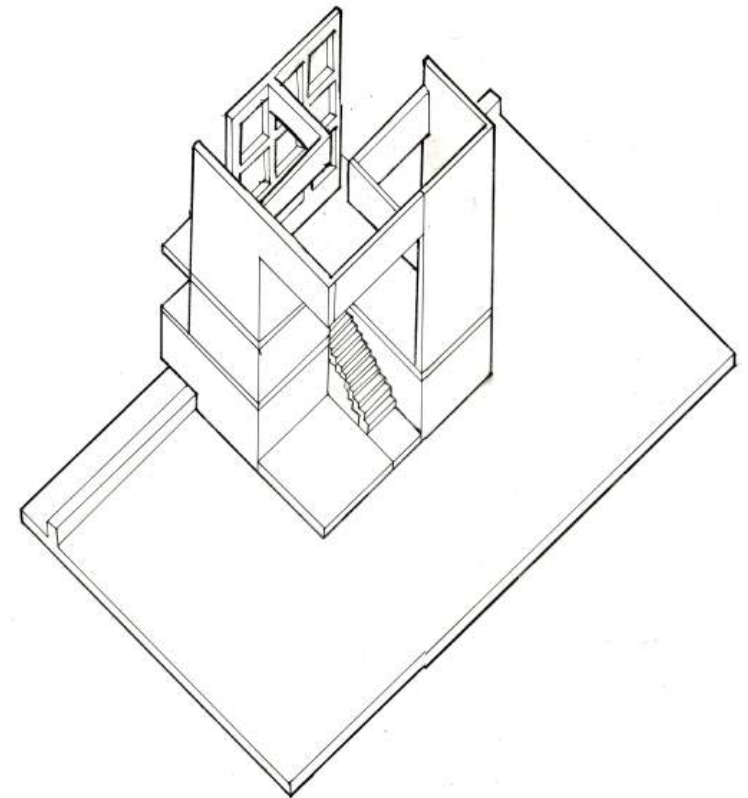
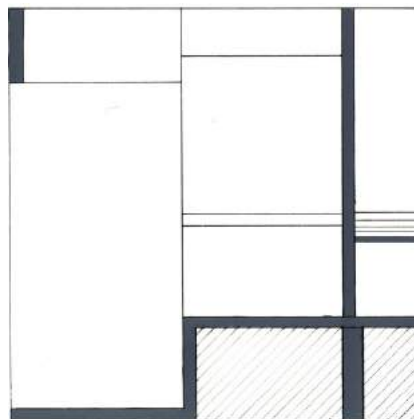
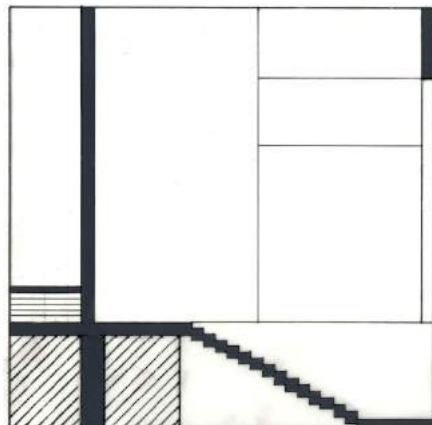
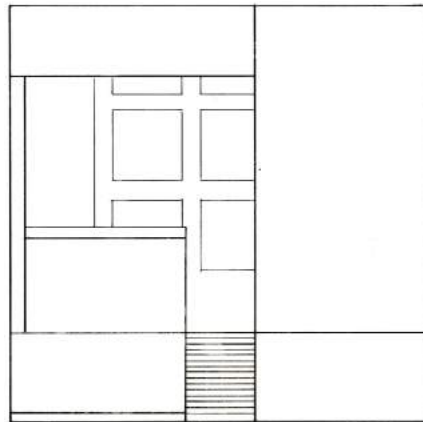
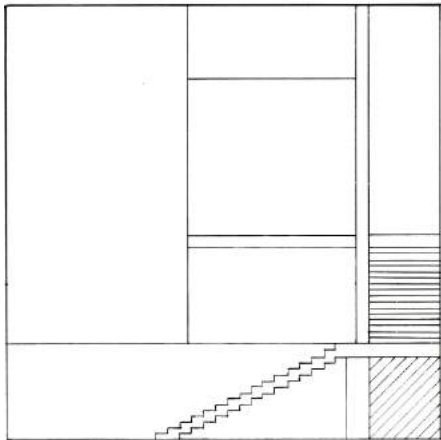
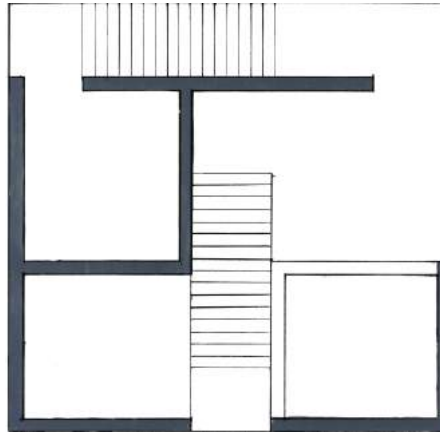
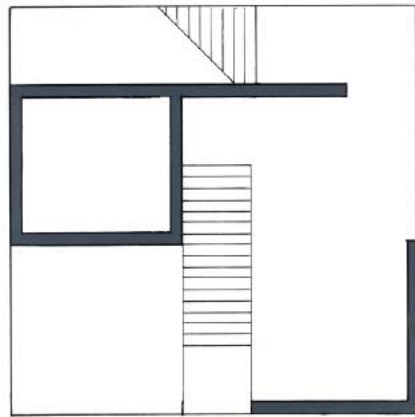


Plans, elevations, and sections.

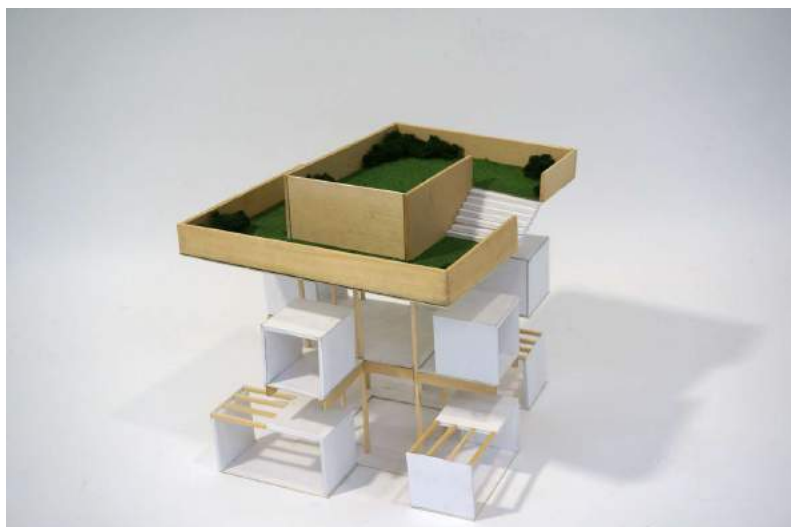


Place

The T-shaped circulation helps to define the different program spaces in the gallery with the program occupying three corners of the space.



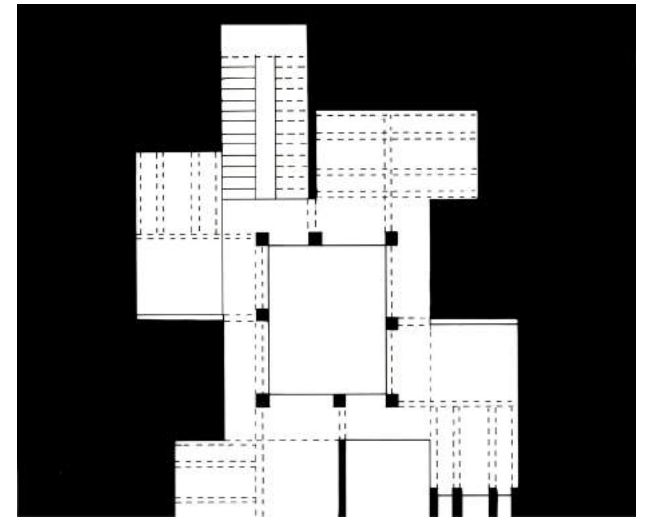
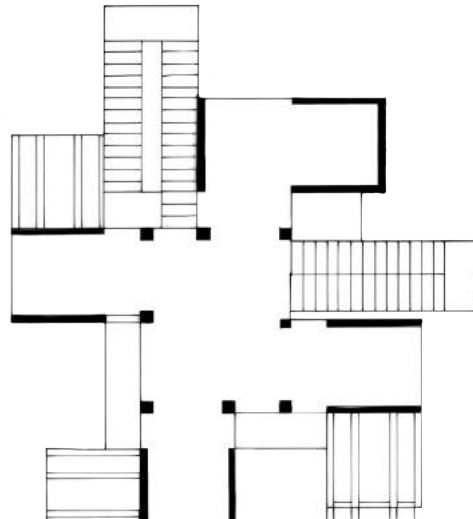
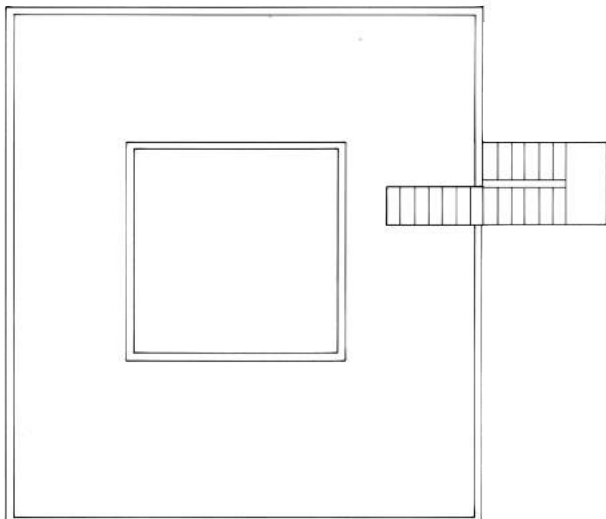
Plans, elevations, and sections.

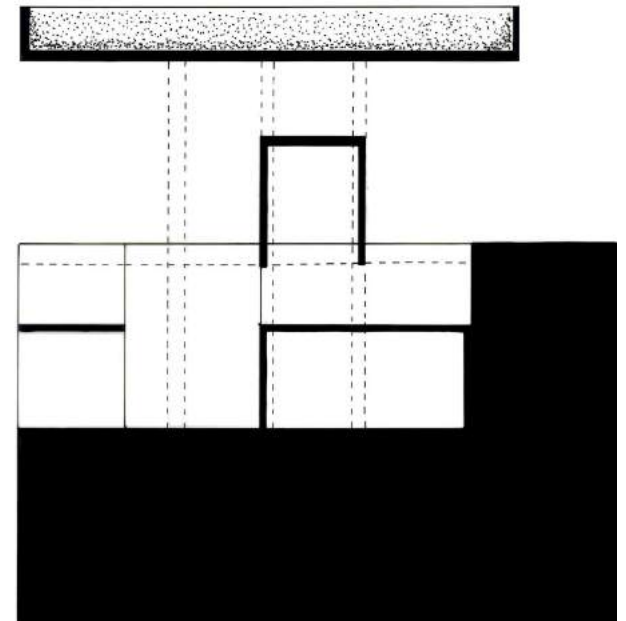
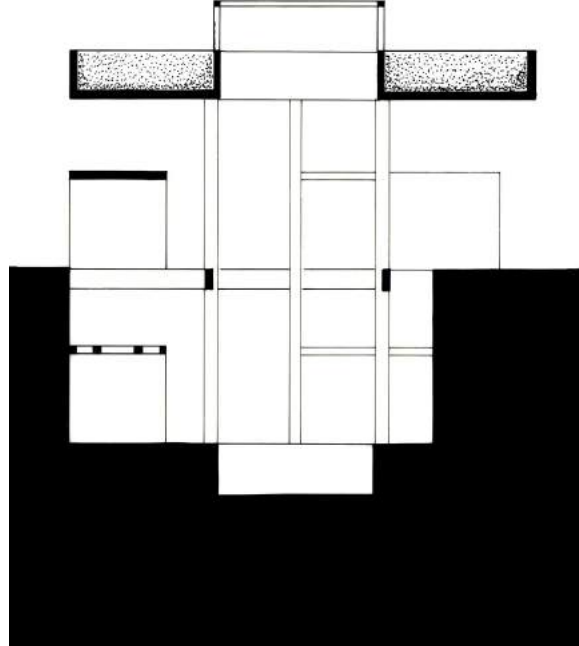
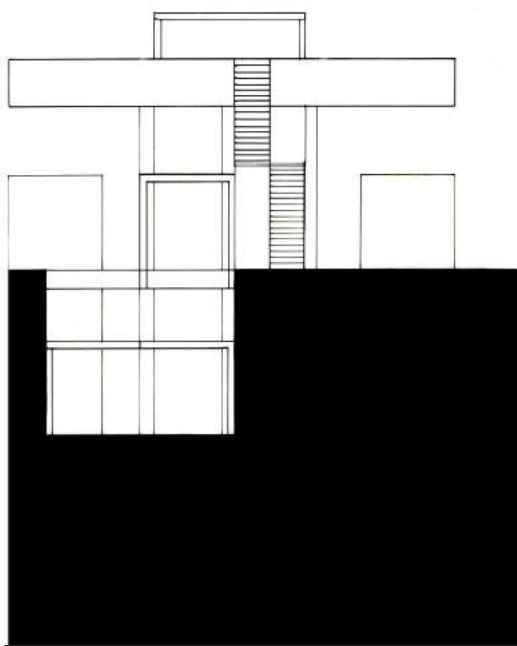
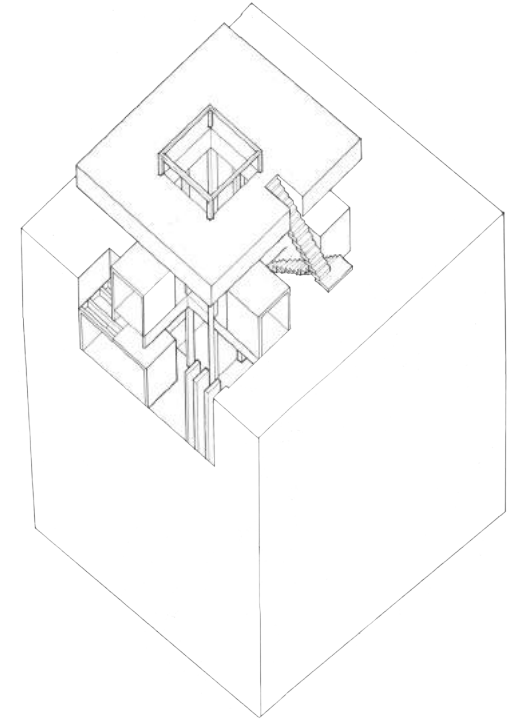
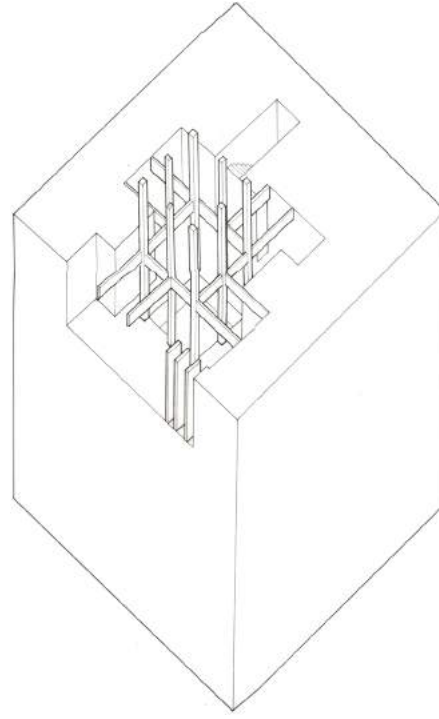
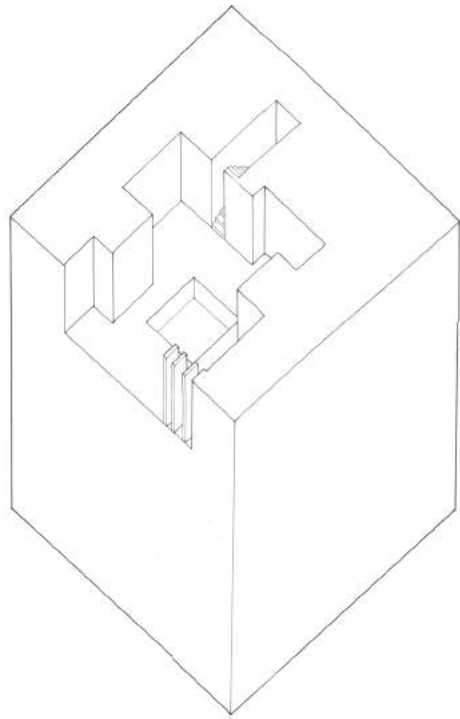


Final Model (bottom right) and study models

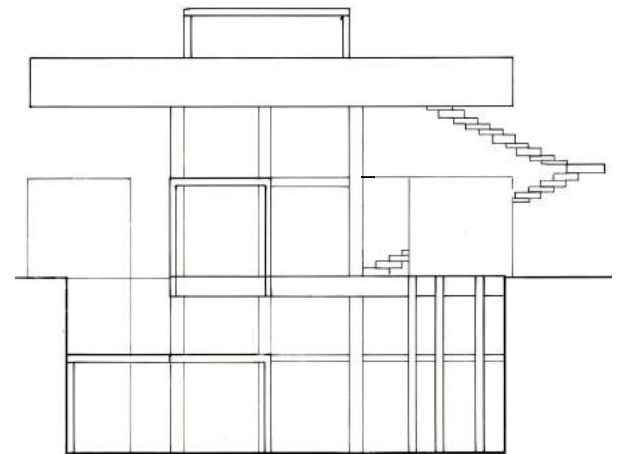
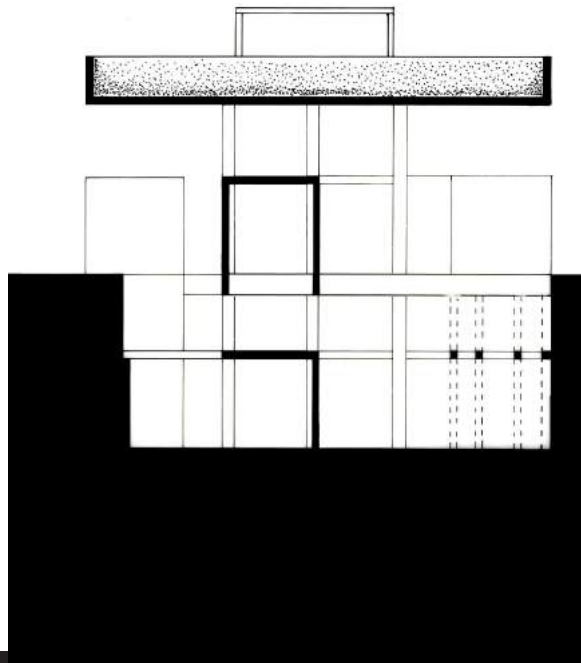
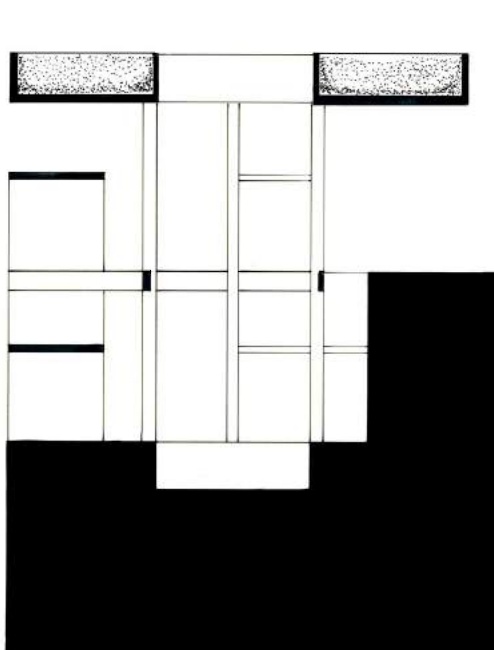
Cliff Dwelling

My approach for the cliff dwelling was to have a central core, the gathering spaces, and have all the programs orbit around it to create simulate rotation in the project.

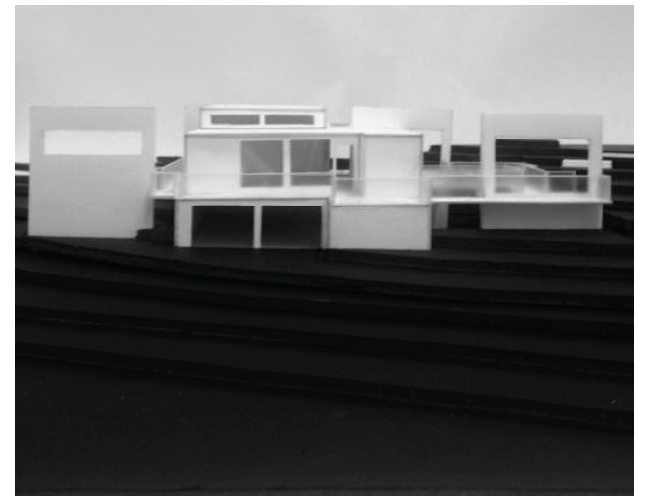
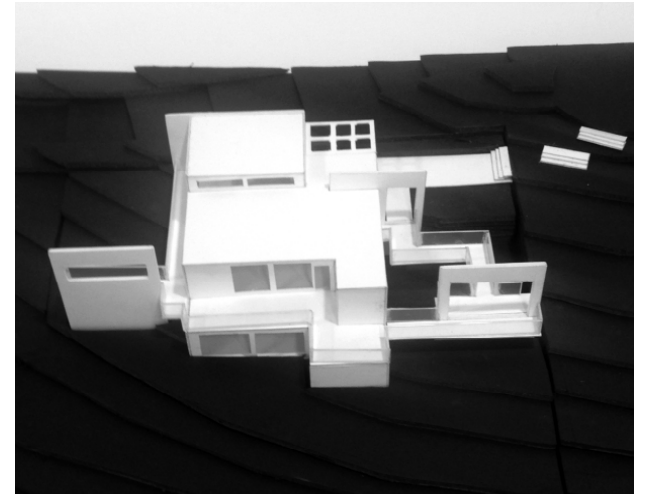
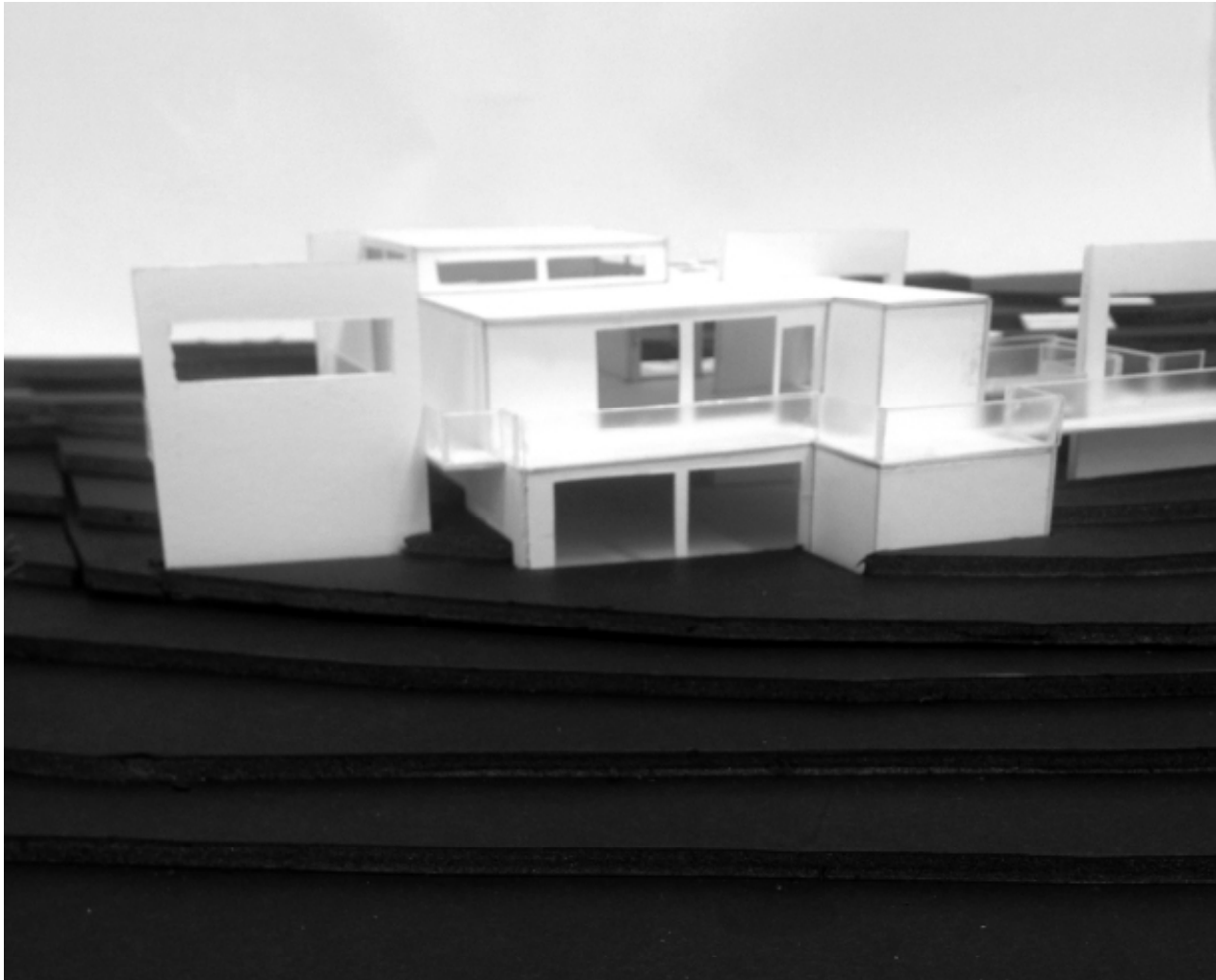




Top: Carving, Masonry, and Final Axonometric; Bottom: East Elevation, East to West Sections



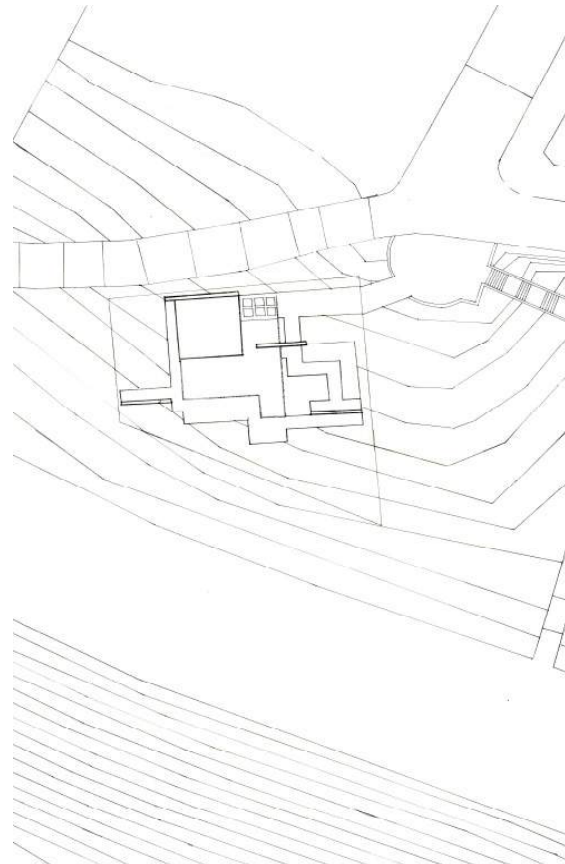
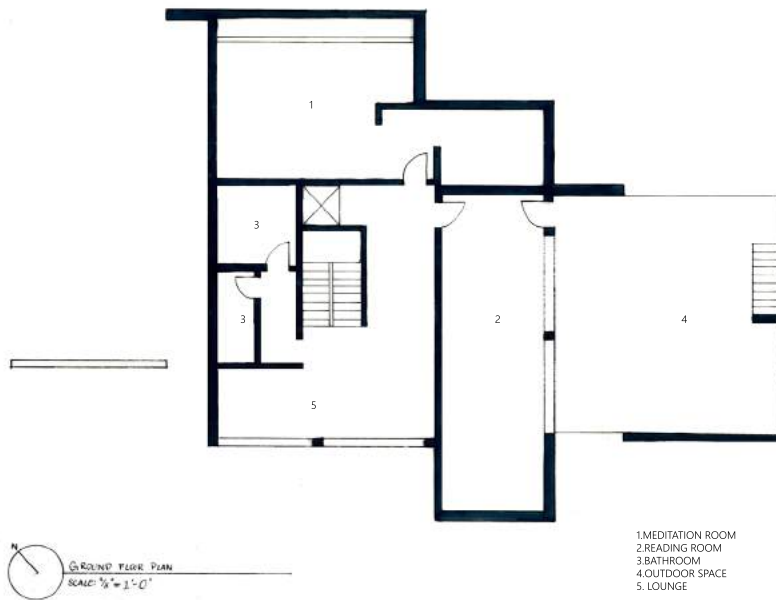
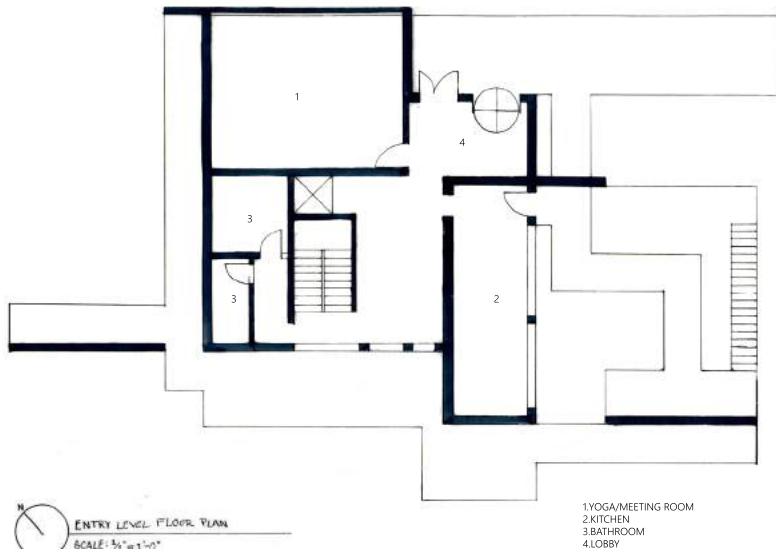
North to South Sections and South Elevation



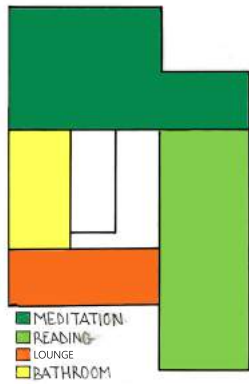
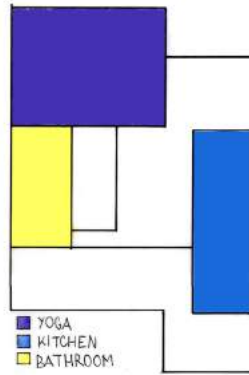
Final Model

A Pavilion for City and Nature

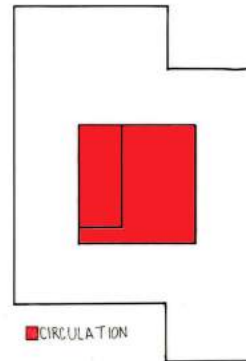
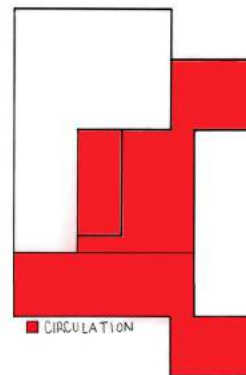
My approach for the pavilion was to exaggerate and show the shift from city to nature. I achieved this through the shift in the building form and also the shifting planes that progressed from city leading up to views of the Hudson River.



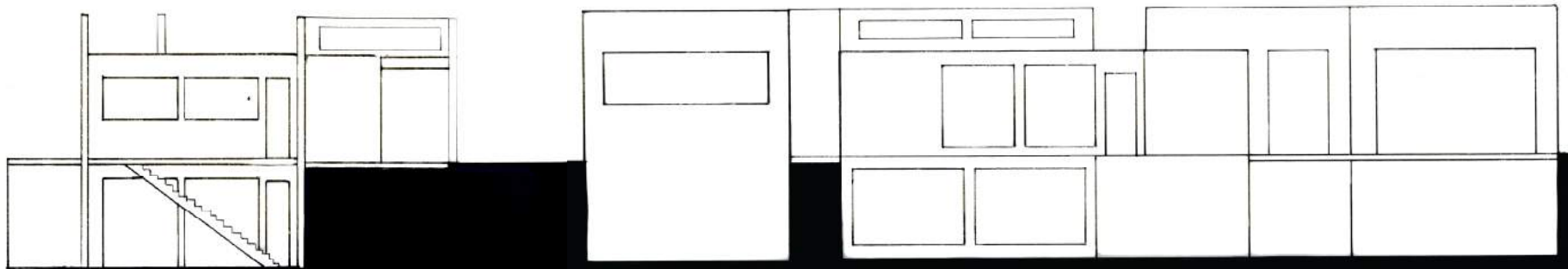
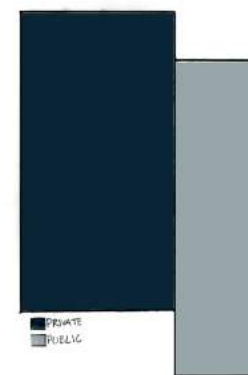
1



2



3

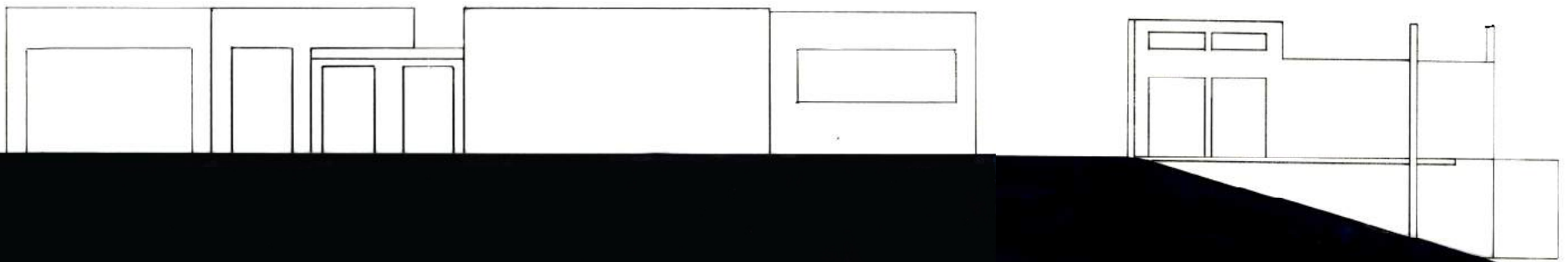
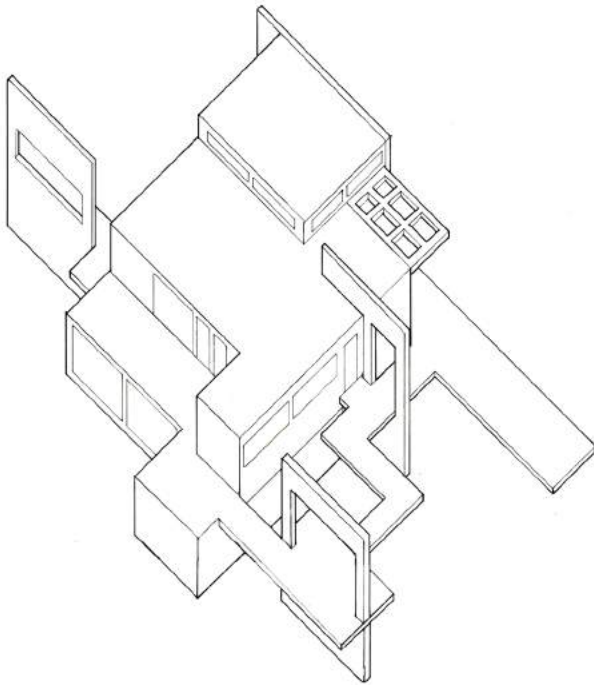


Top:Diagrams; Bottom: North & East Elevation (Hand-drawn)

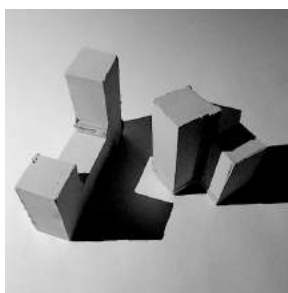
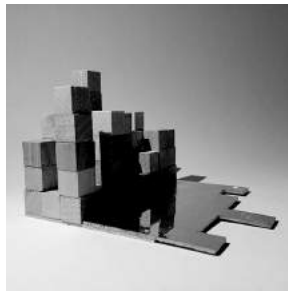
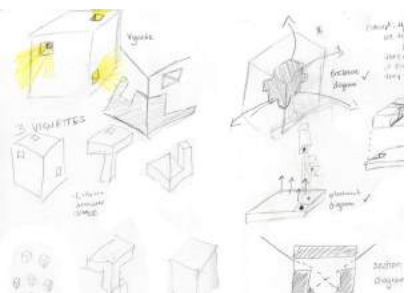
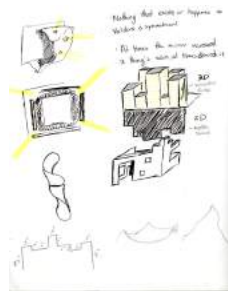
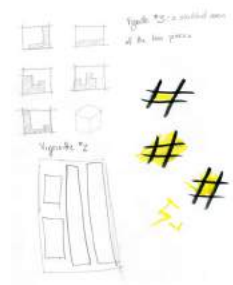
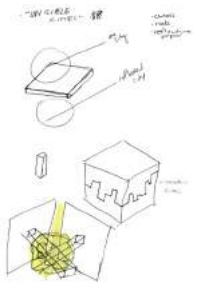
1. Program (First/Second Floor)

2. Circulation (First/Second)

3. Public vs. Private



Top: Axon; Bottom: West & South Elevation (hand-drawn)



(Left to Right): Initial Sketches, process models, final models. Equally completed by partner and I

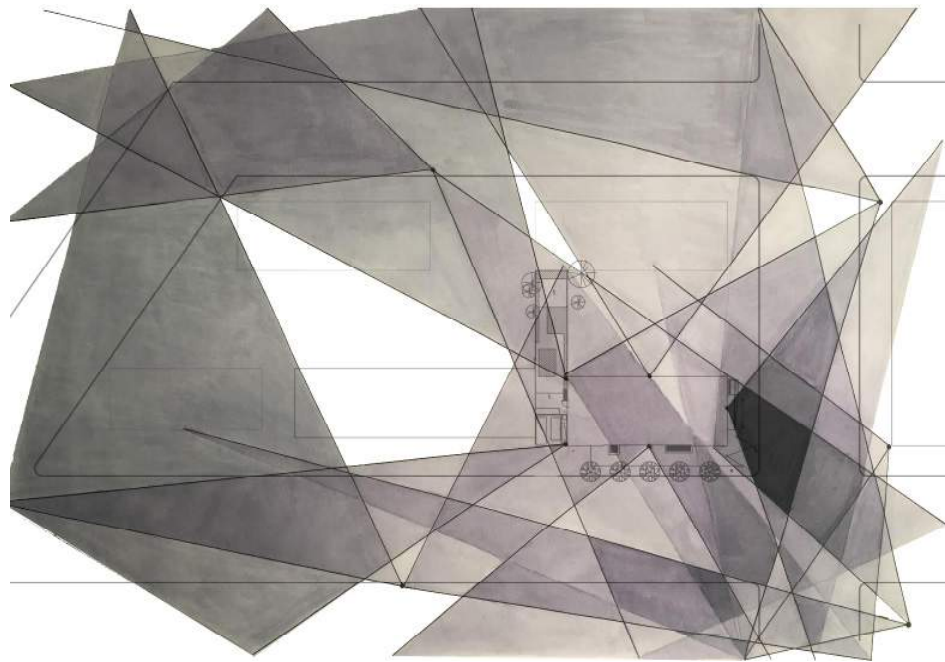
The Virus

Charrette 1-From Reading to Space(Left)

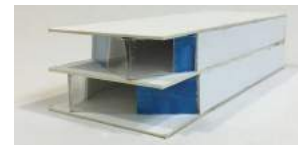
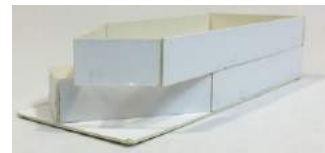
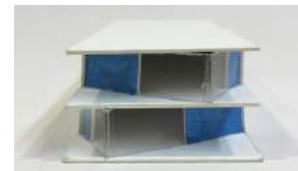
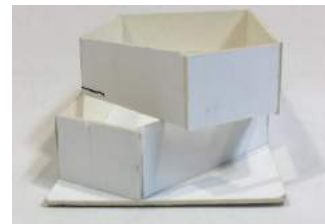
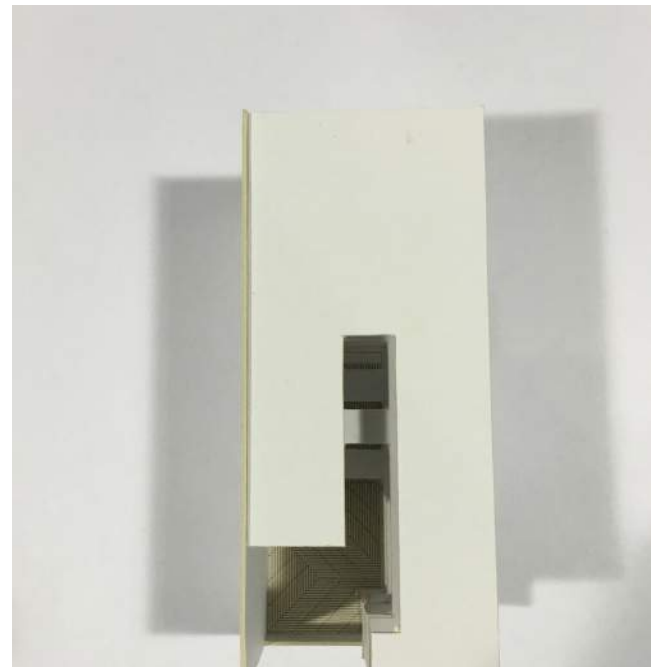
My partner and I were assigned an excerpt titled Cities and Eyes 1; it focused on the comparison of these two cities, one the real thing, the other a reflection.

Charrette 2-Site (Right)

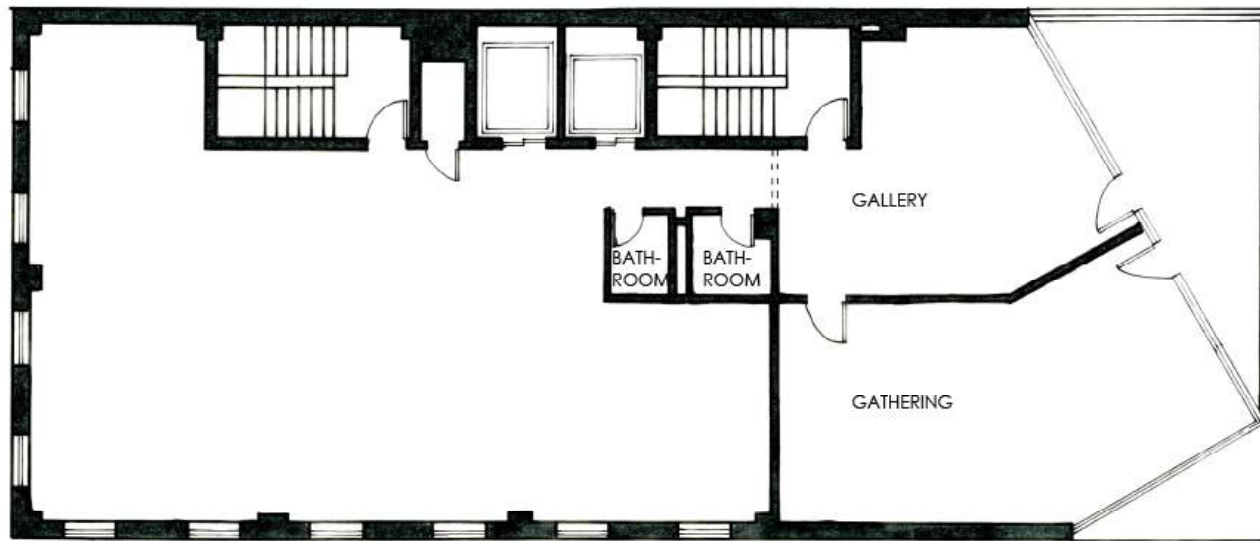
My partner and I created overlays determining the different views that one would be able to see from any point within the site, 80 Hanson place, and from around the site, looking towards it. We also mapped the different travel routes that exist around the site. This included car transportation and pedestrian travel routes.



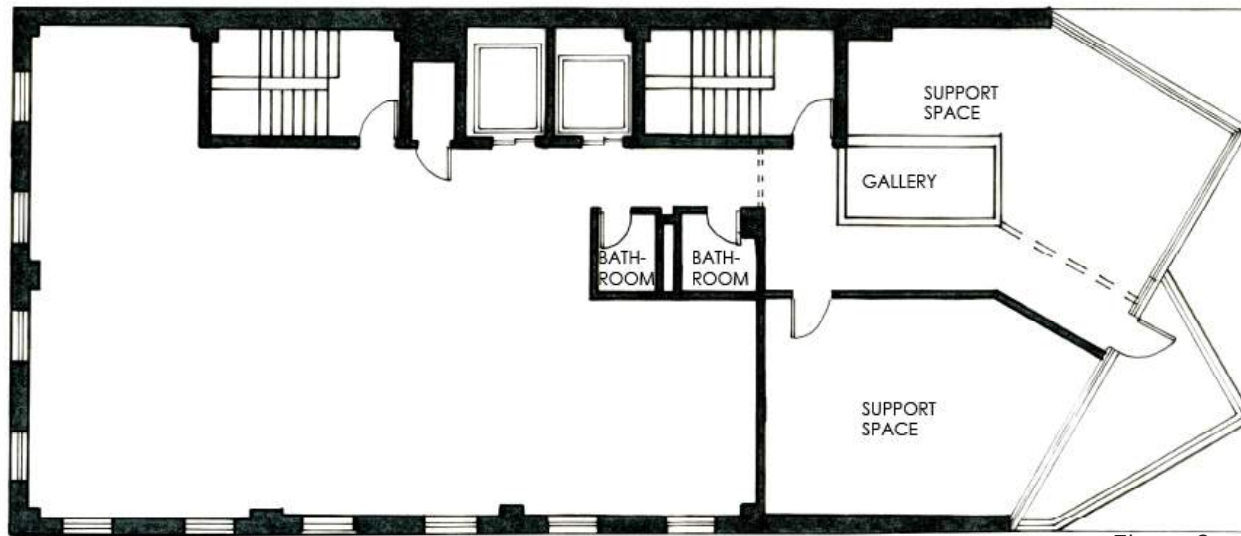
Top: View Corridors; Bottom: Vector Map. Equally completed by partner and I (Both hand-drawn)



Final Models and study models



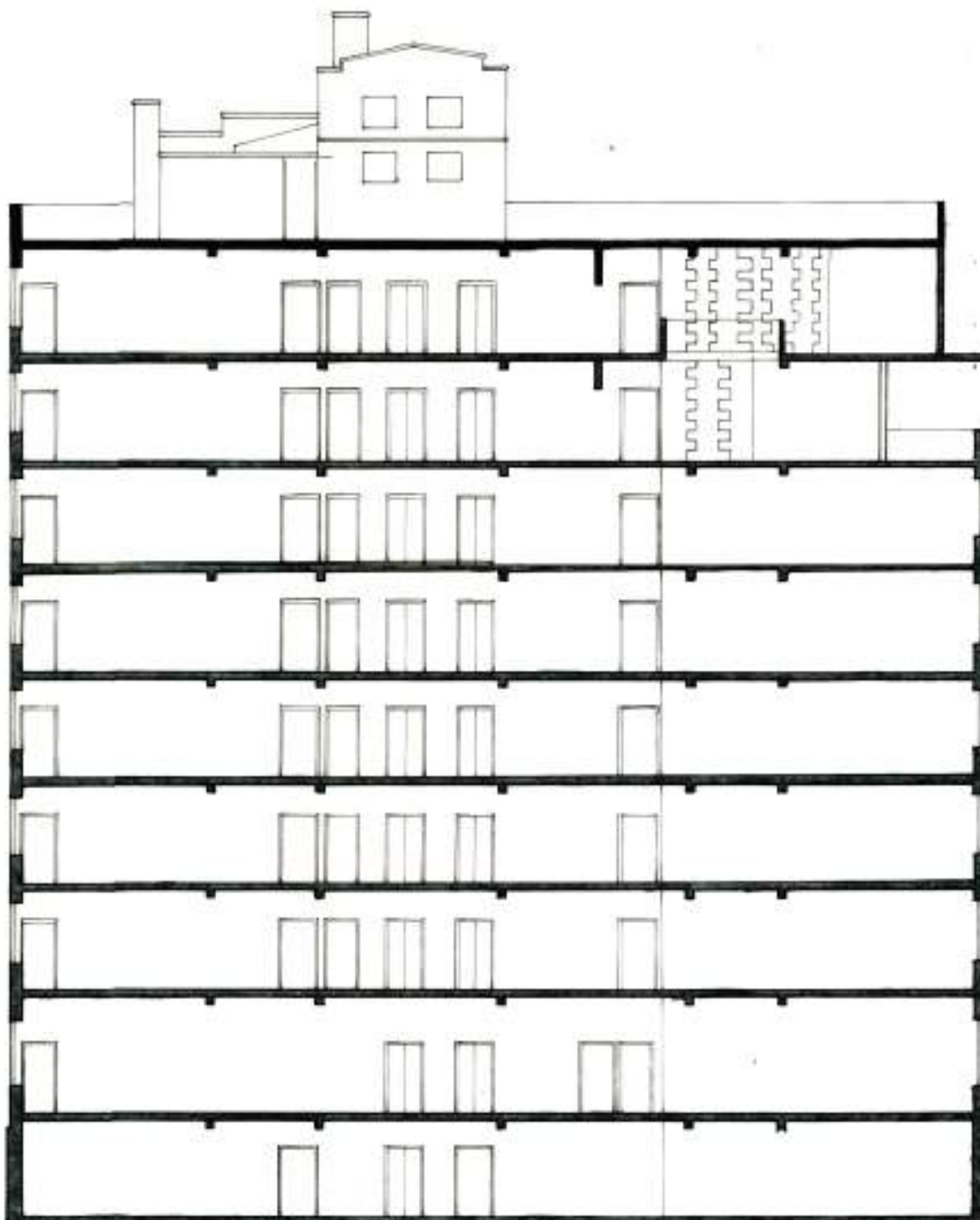
Floor 7



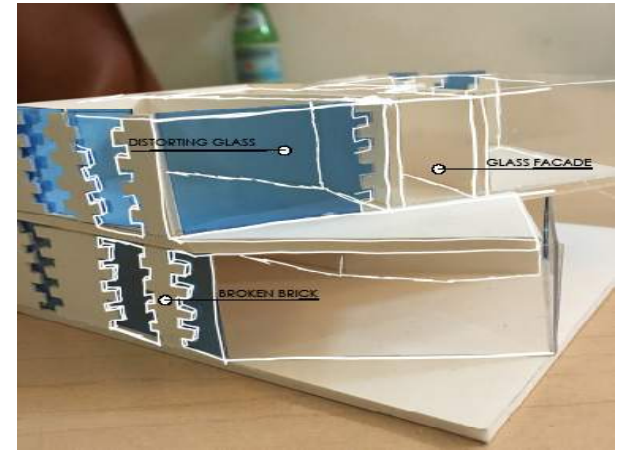
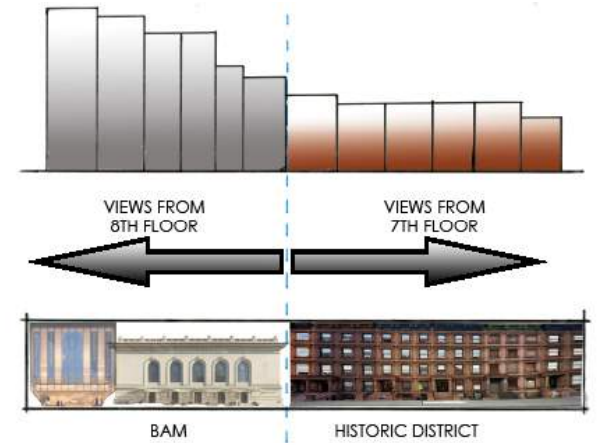
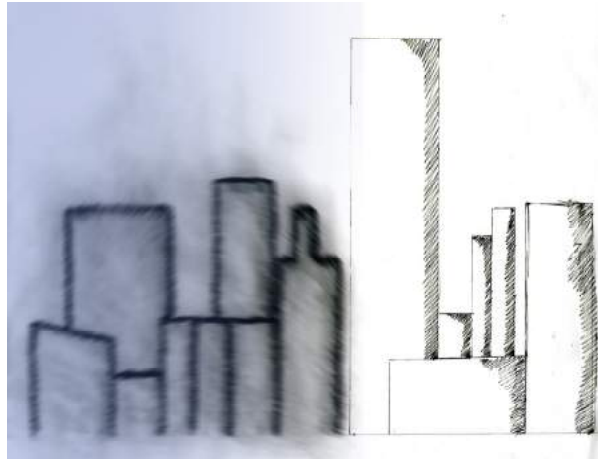
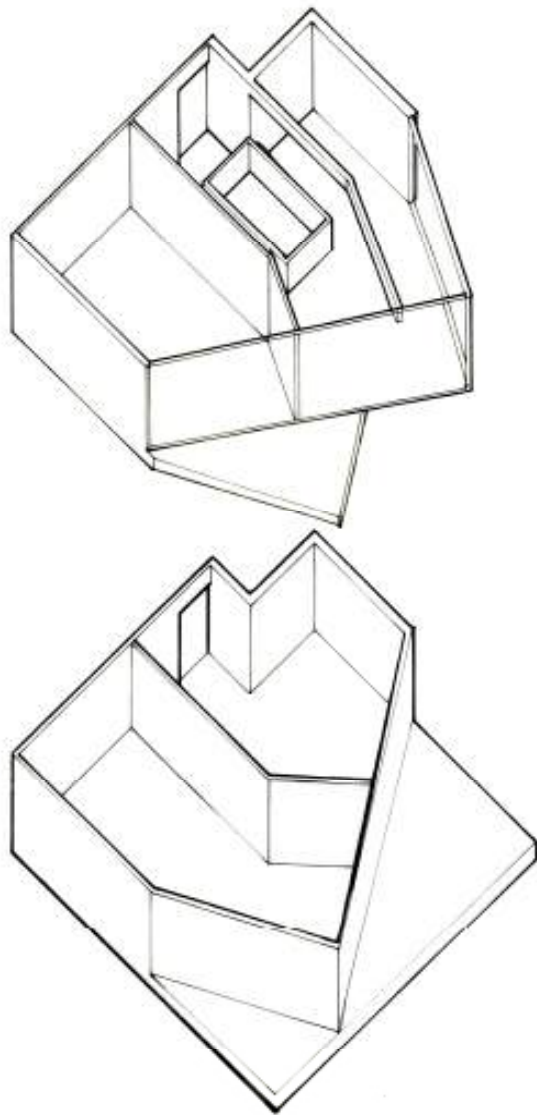
Floor 8

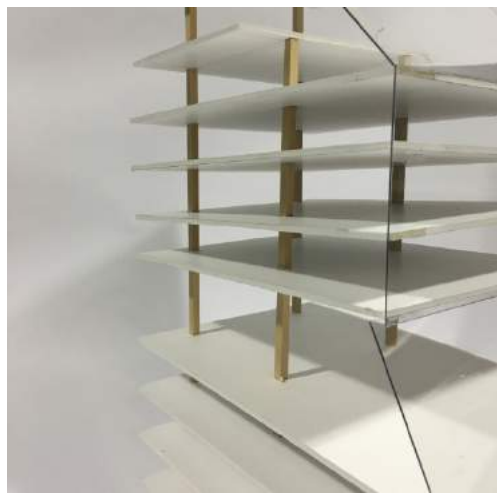
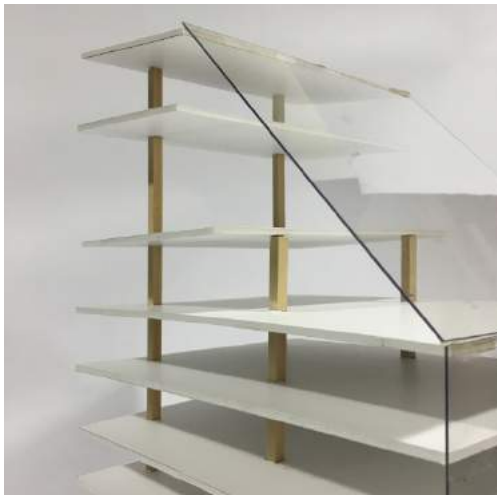
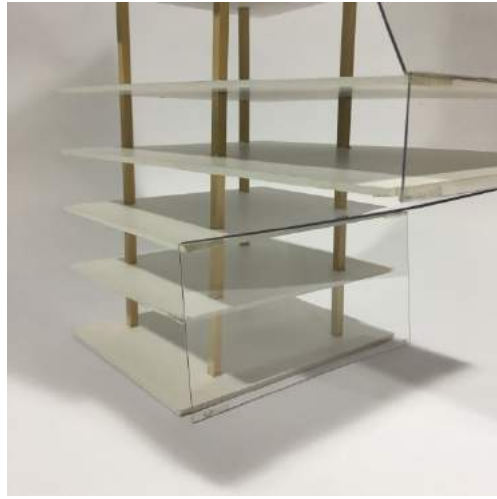
The Virus

Based on the reading and my work on the charrette, I designed my project on the intergration and manipulation of light(charrette 1),and views,(charrette 2) in my project. I transitioned from brick to unobstructed glass, on the sides of the projects to resemble that of the city The opaque glass and clear glass in my project are supposed to resemble the mirror and how it both increases the value of the city, clear, while decreasing the value of the city, opaque.

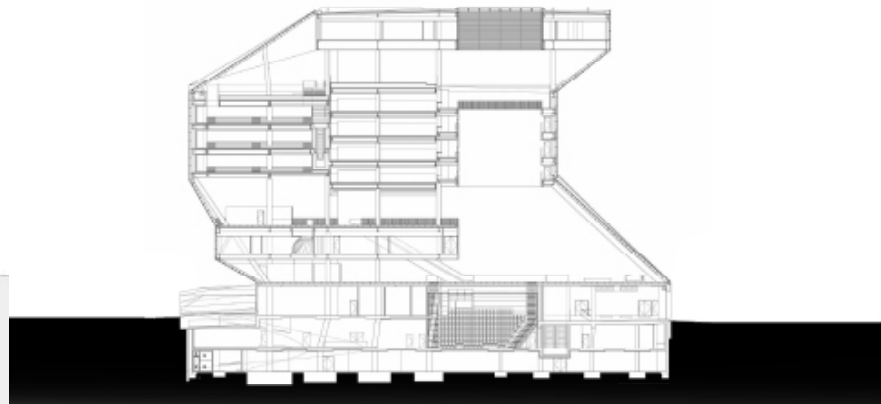
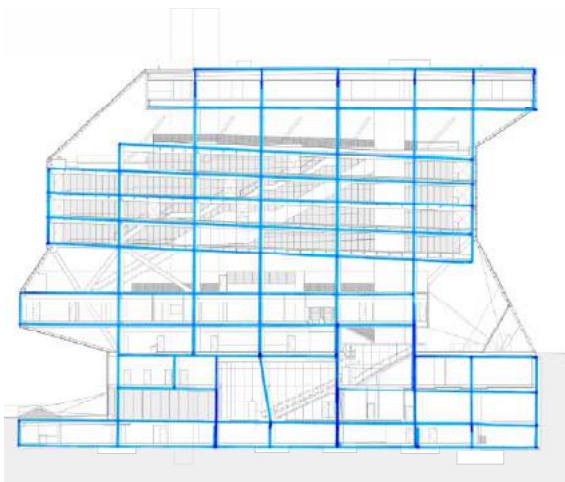
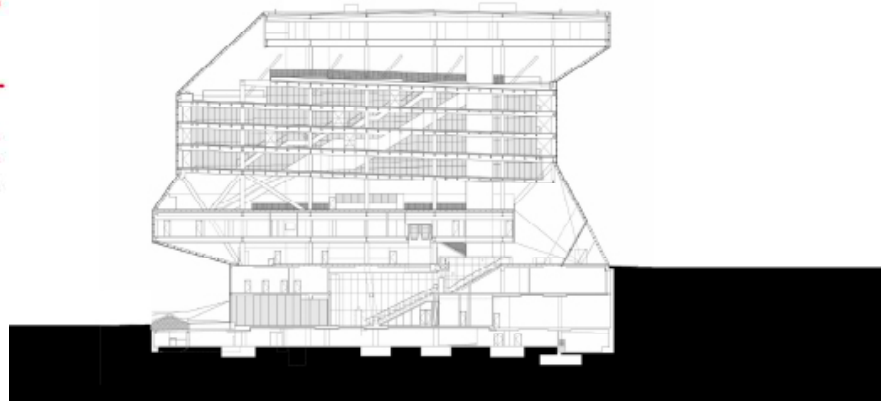
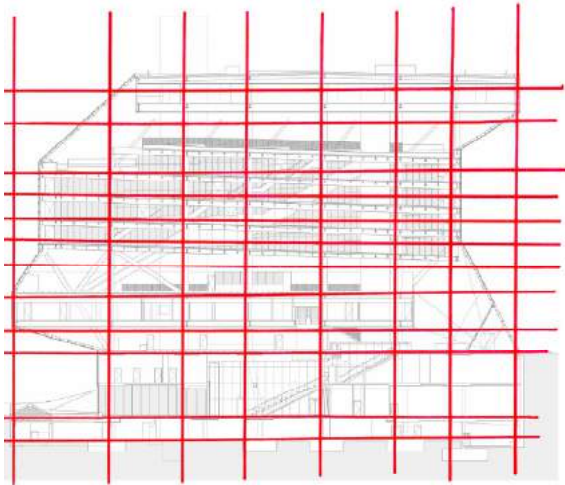


(Left to Right): Longitudinal section, transverse section (hand-drawn)



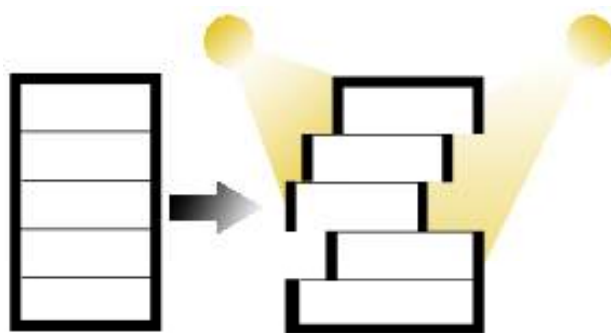
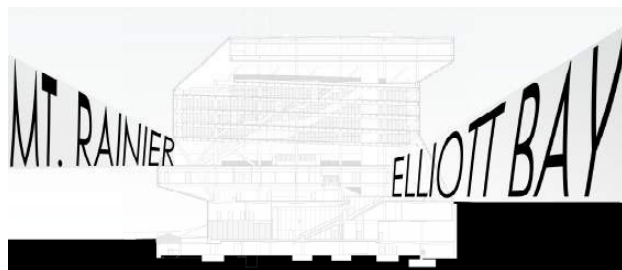
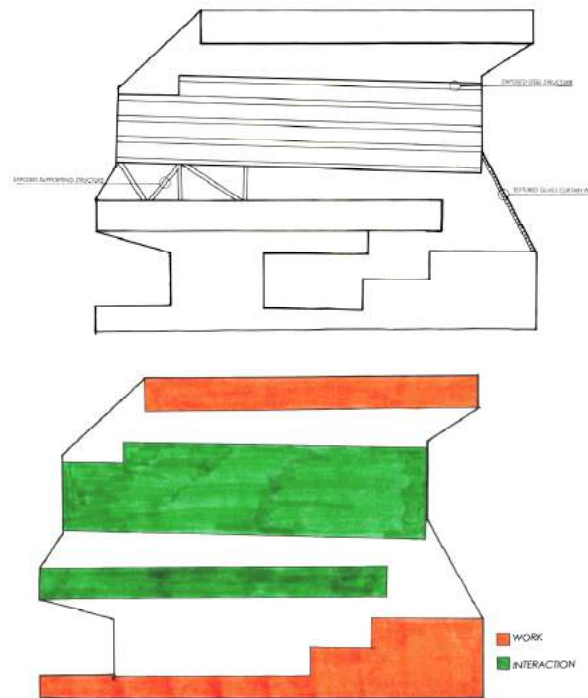
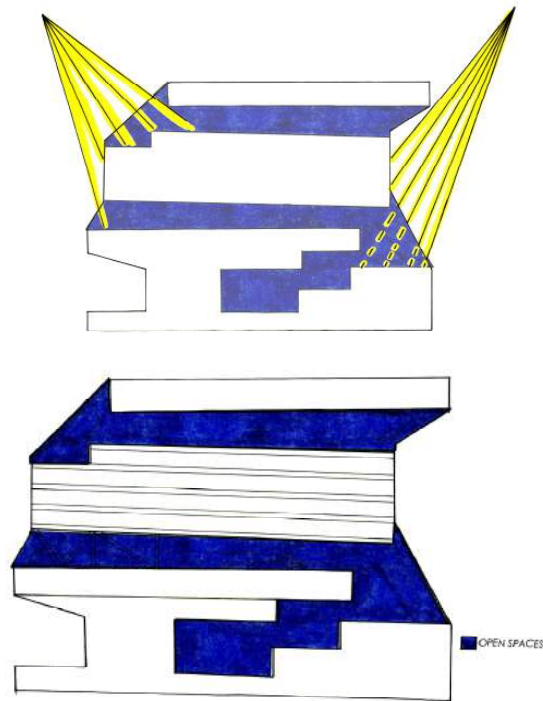


Sectional Structure Model



Charrette 3 - Seattle Public Library

My precedent study was the Seattle Public Library by OMA+LMN. The project has a lot to do with the shifting of views and program, while having a completely glass facade all around that gently covers the shifting platforms, that allows for light to penetrate different areas.



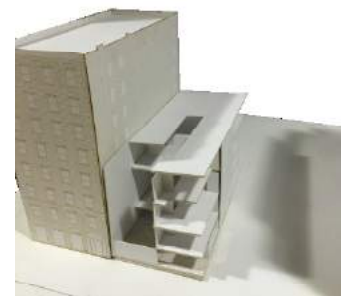
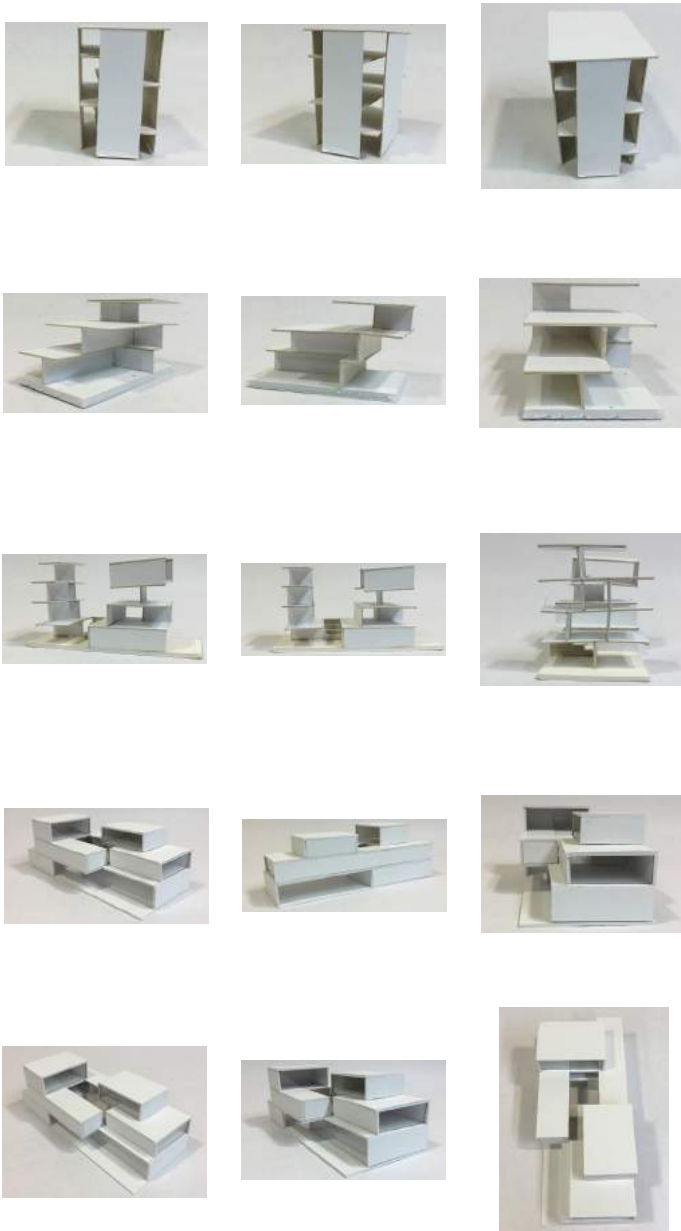
Diagrams of Seattle Public Library showing how the project integrates shifting, hierarchy of program, and light into the project



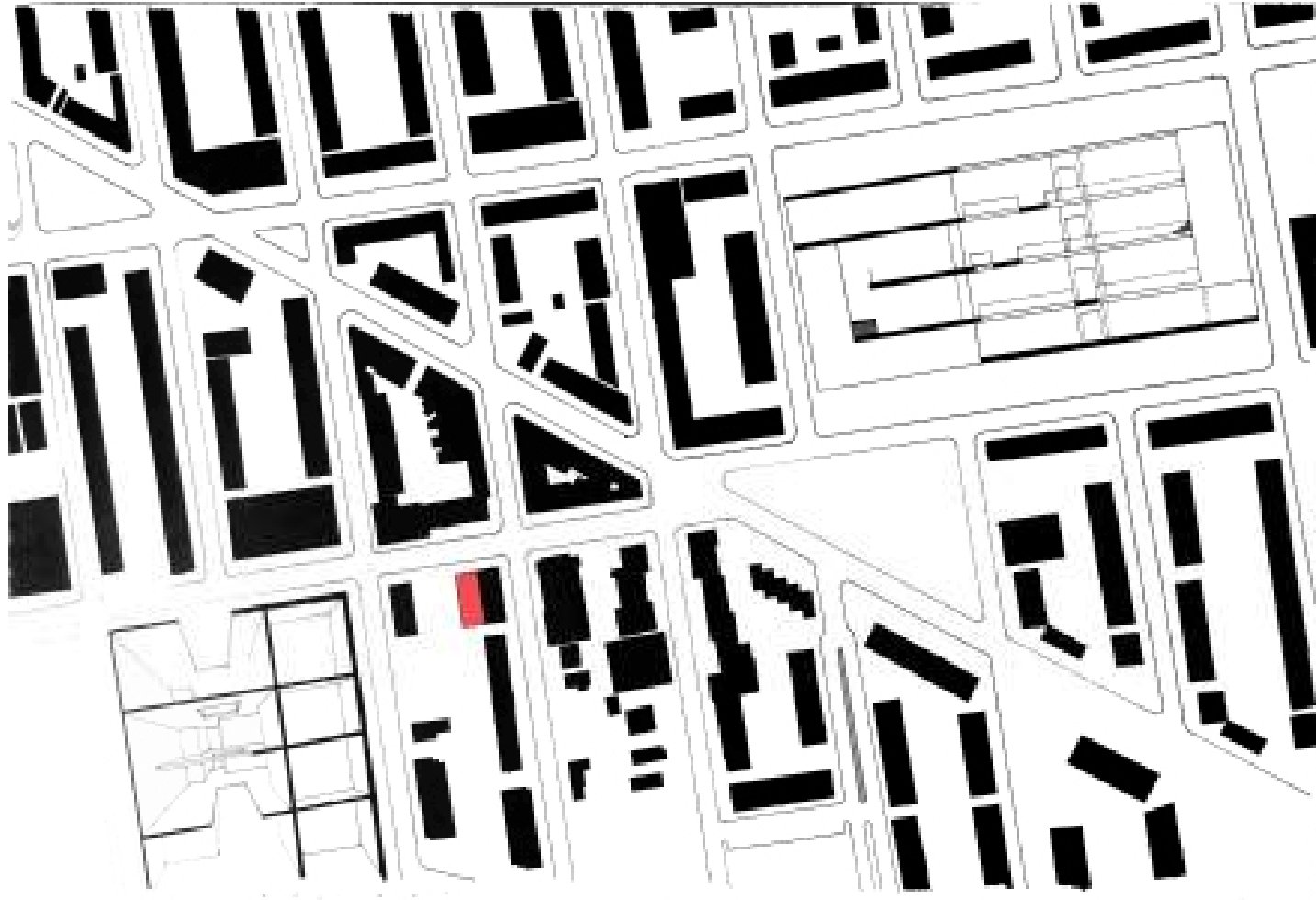
Charrette 4 - Material

My materials for this project were kept simple. I chose to have exposed steel members for the structure, concrete walls, for the private program and circulation, and have glass everywhere else to mimic some of the characteristics of the Seattle Public Library.



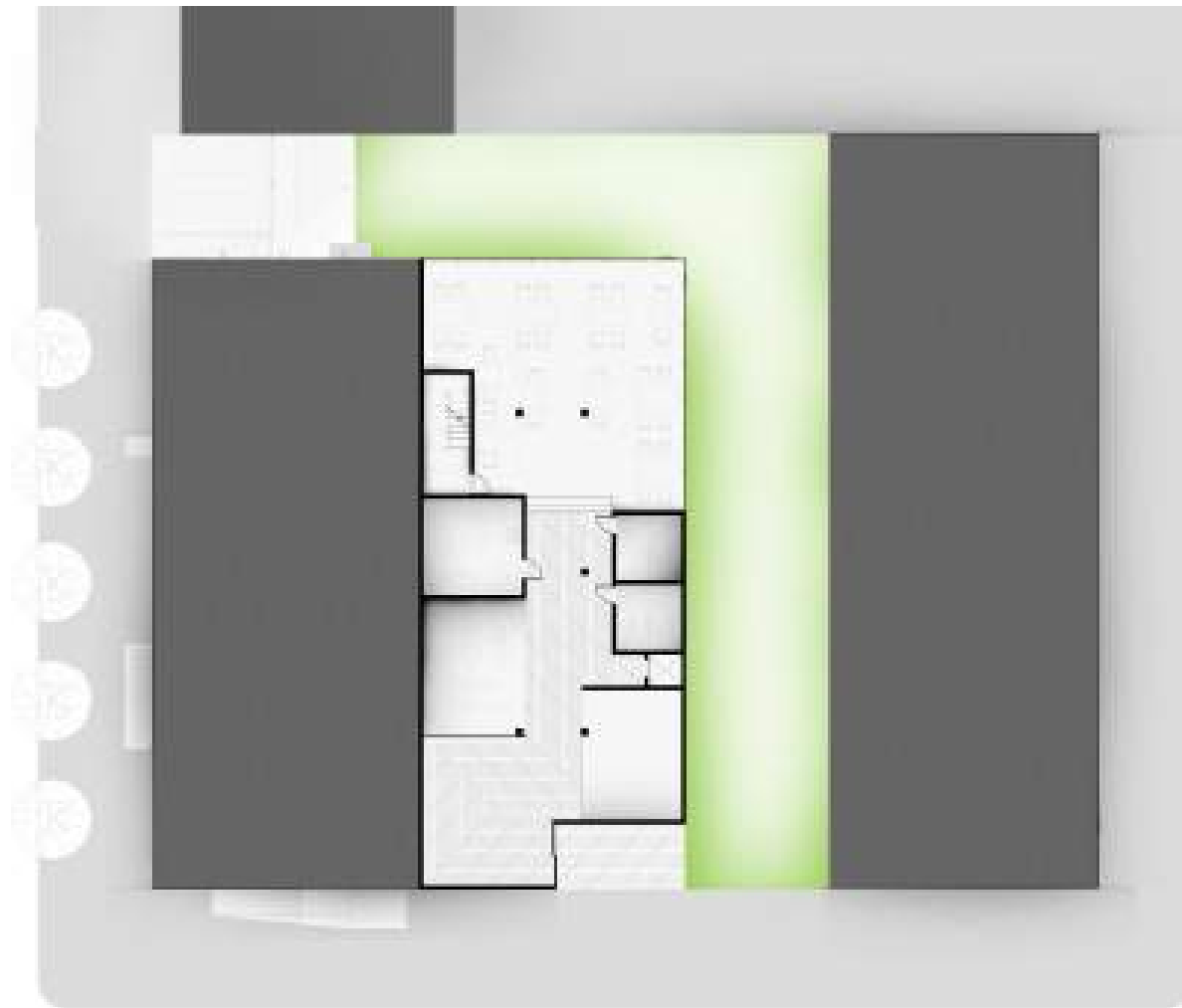


Study Models (left) Final Model (right)

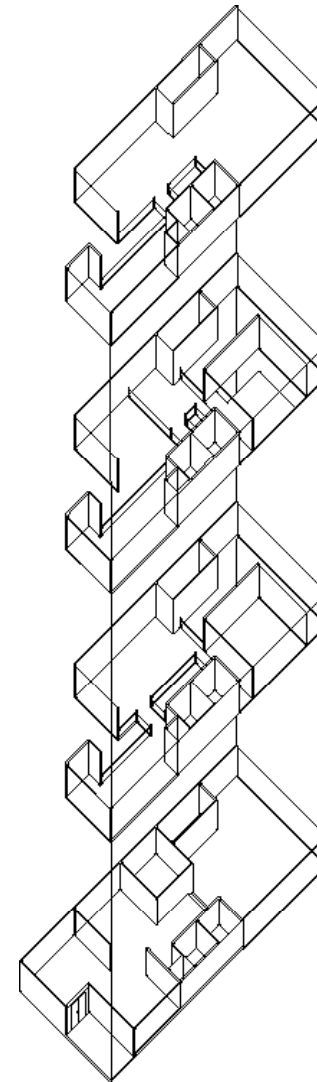
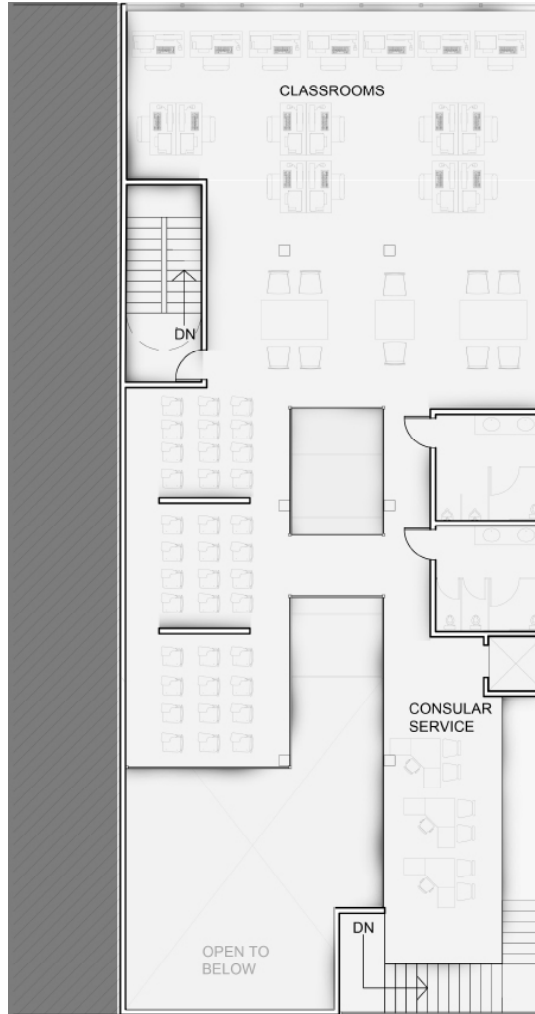
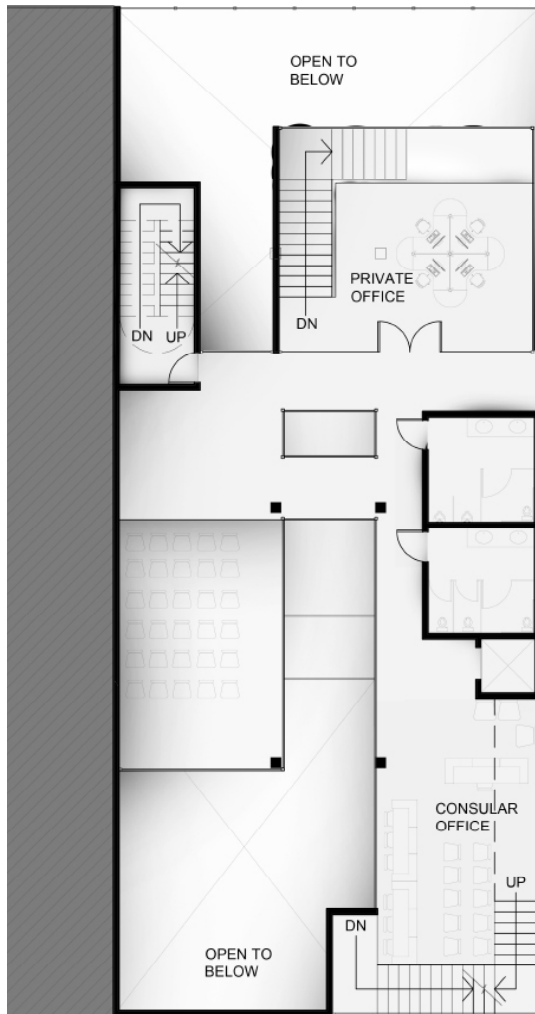


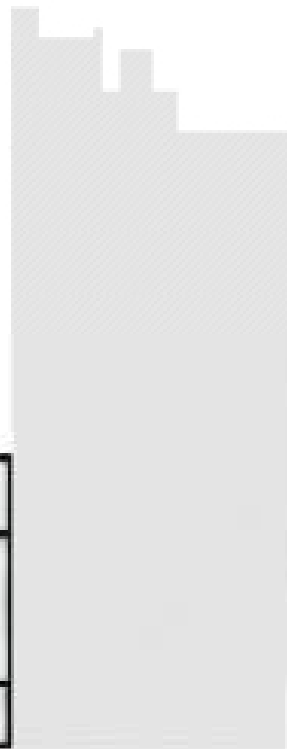
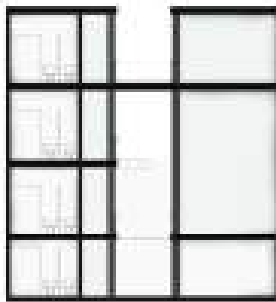
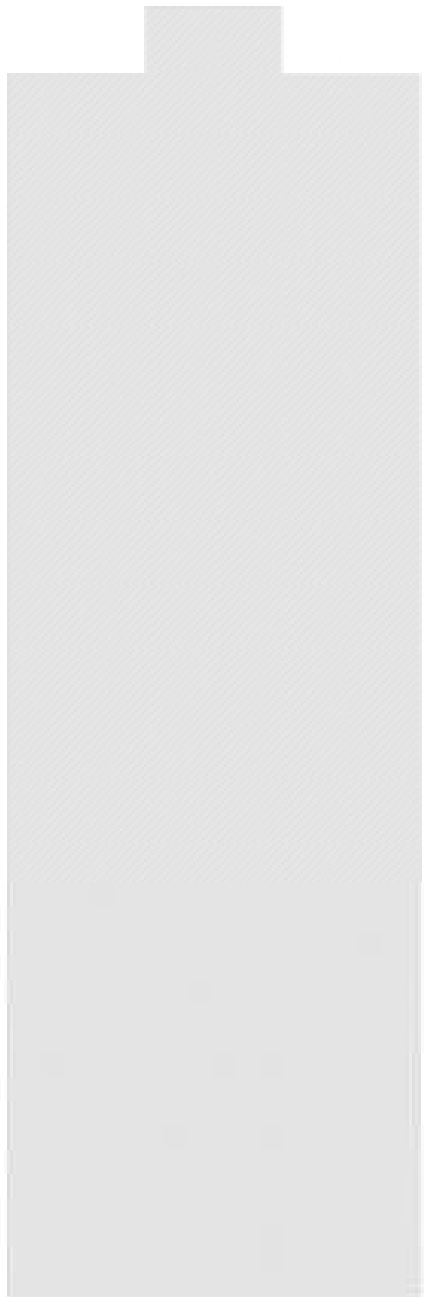
The Prosthesis

This project is about the manipulation of light through the shifting of program to achieve public interaction. With inspiration from my precedent study, I explored shifting to achieve open spaces, areas of interaction and defined areas to receive light.

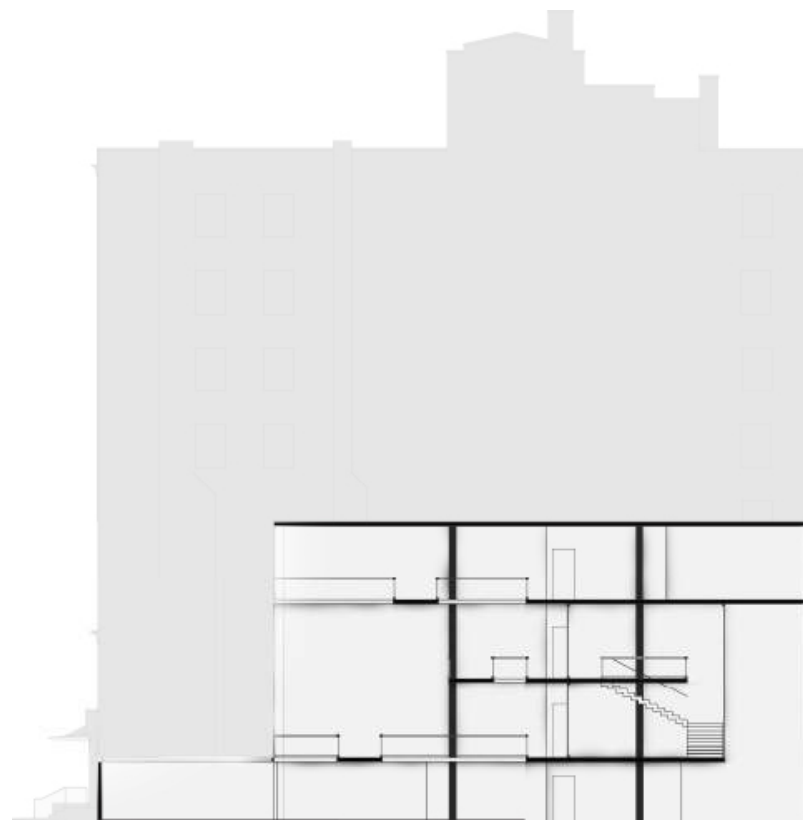


Plans (Left to right: Ground floor, first floor, second floor, third floor, fourth floor, axon)

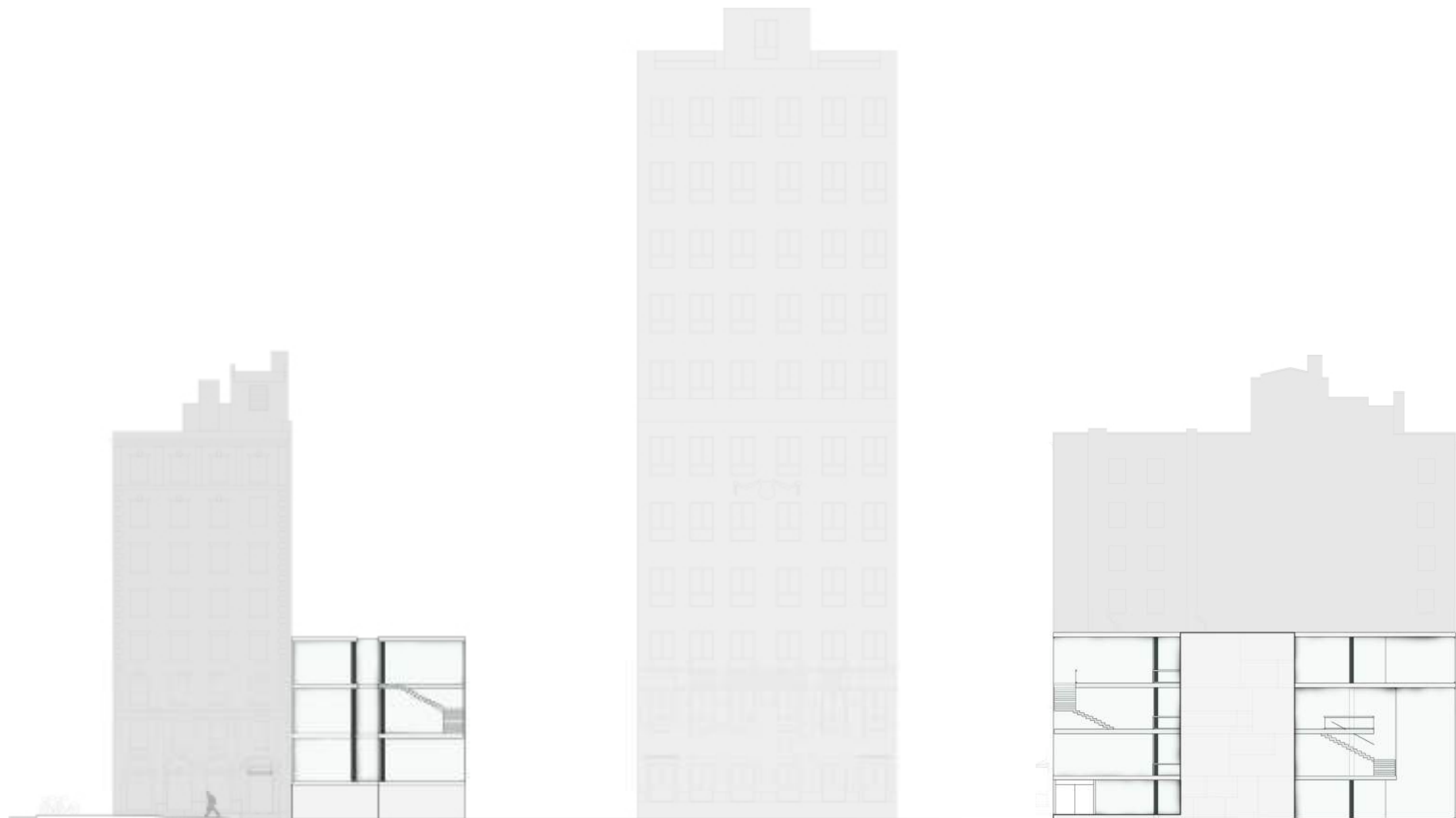




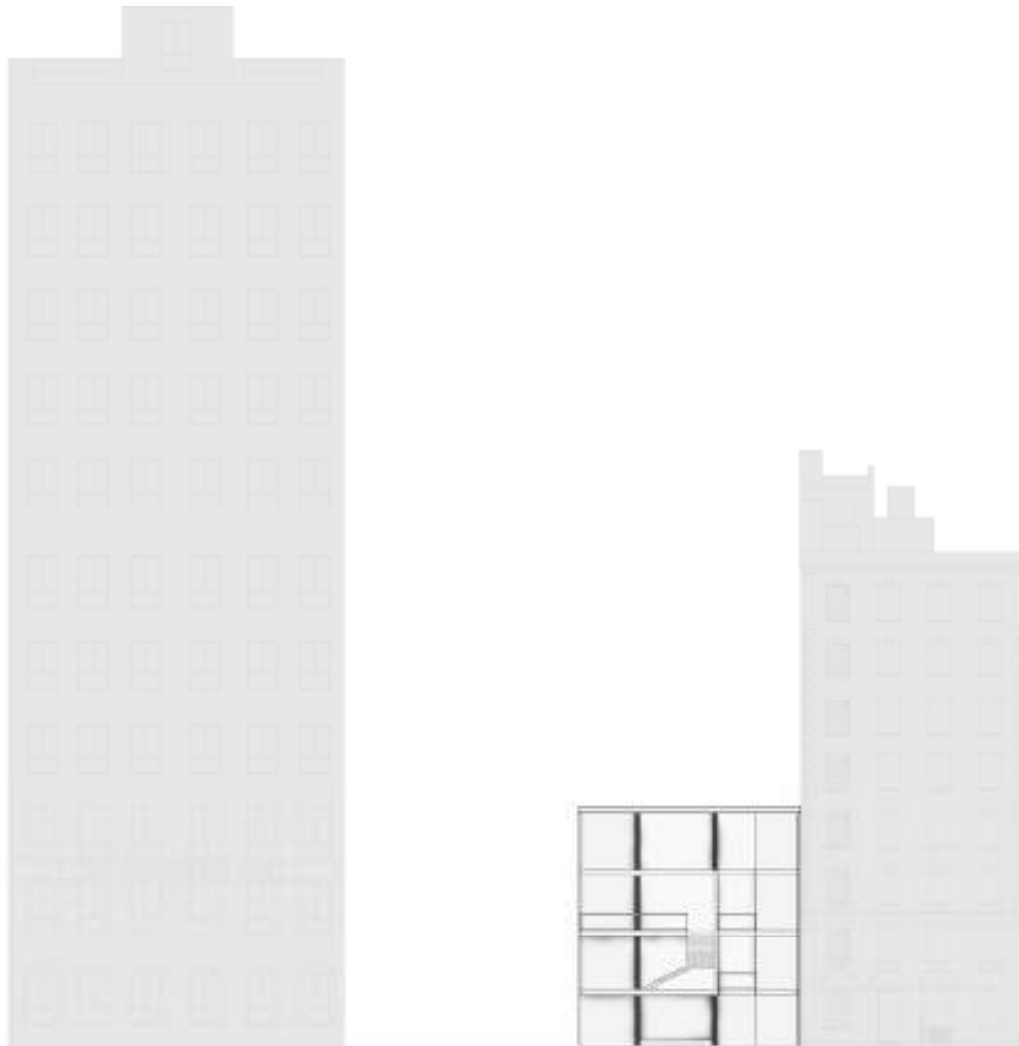
Transverse Section



Longitudinal Section



Left to Right: North Elevation, West Elevation, South Elevation



1

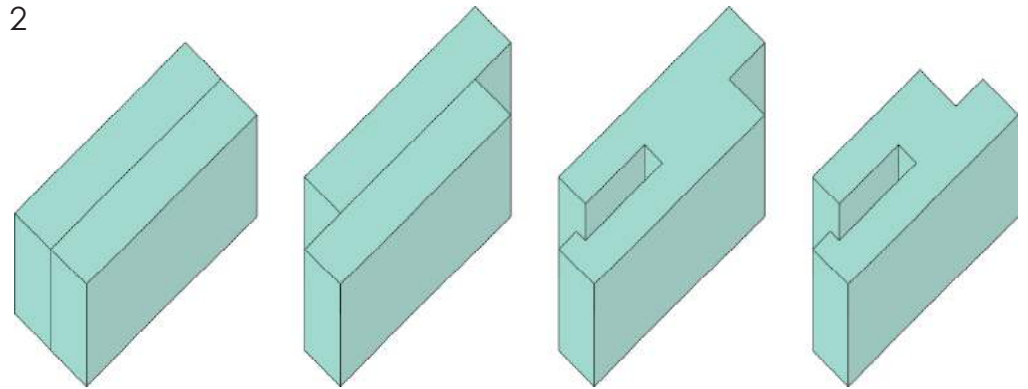
CLASSROOMS
MEETING PRIVATE
HALL OFFICE
LOBBY LIBRARY CAFE

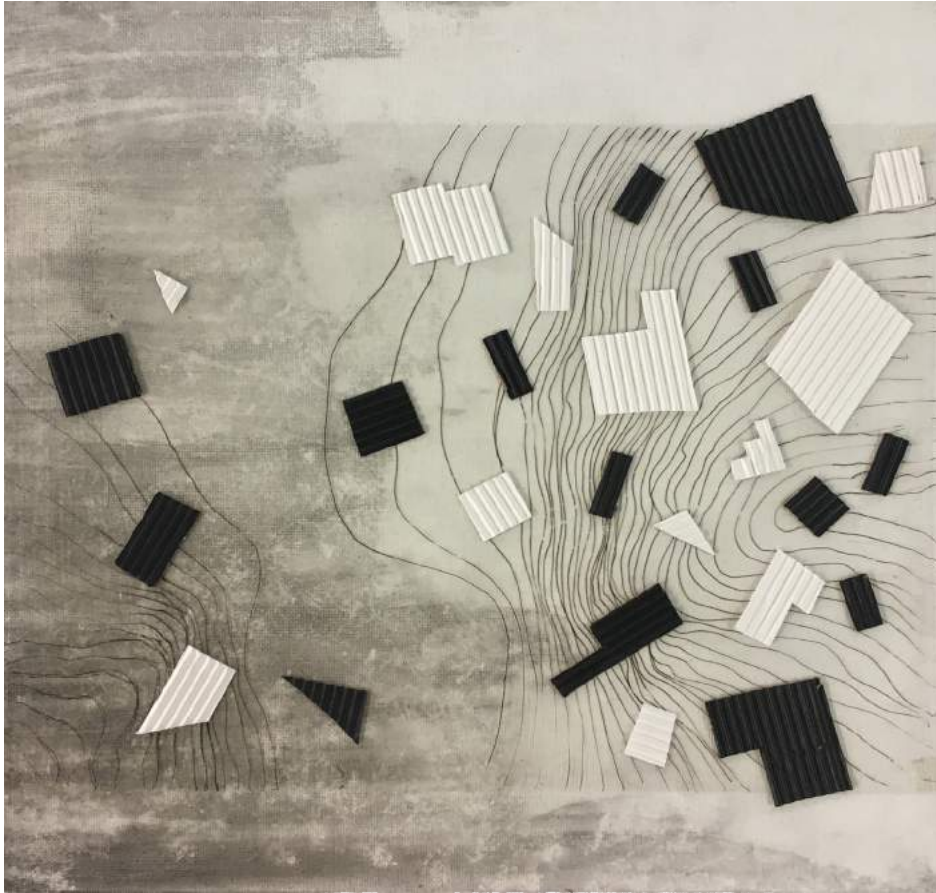
CLASSROOMS CIRCULATION CONSULAR
PRIVATE CIRCULATION SERVICE
OFFICE CIRCULATION MEETING
CAFE CIRCULATION HALL
LOCAL ARTIST VENDOR

1. Program Diagrams

2. Form Sequence

2





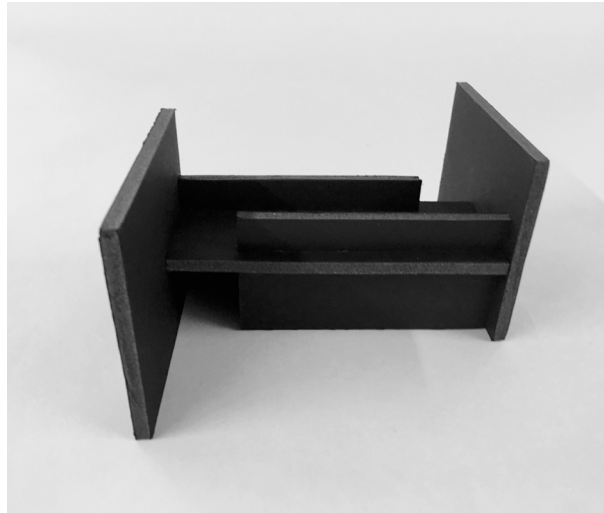
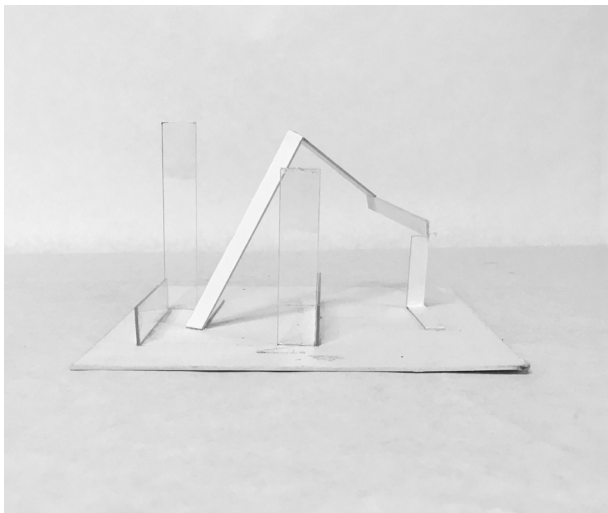
The Police Station

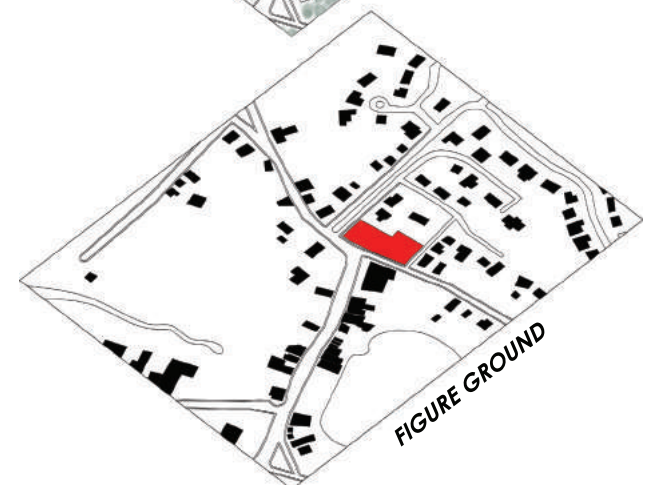
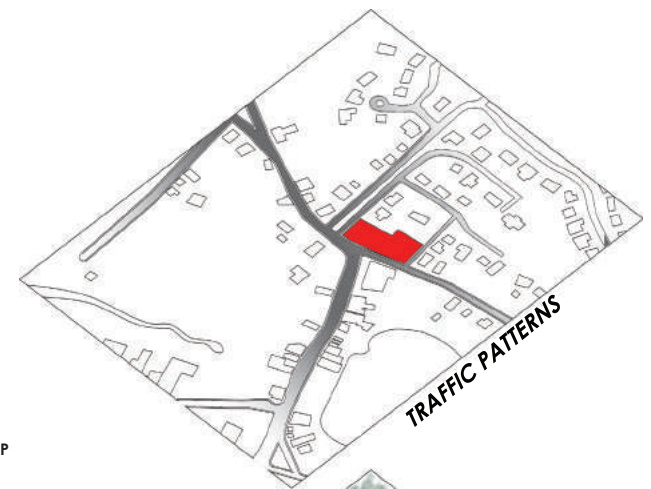
Warm-up 1A - Collage (Left)

My inspiration for the collages was the site and my first interpretations of it. Both collages resemble the topography of the land as it goes from steep to flat, the density as it transitions from crowded to spread out, dry to wet. The first collage takes a more literal approach, while the second takes a more abstract one.

Warm-up 1B - 3D Form Study (Right)

The first model, informed by my collage, is an abstract representation of how the land and water work together to create integrated spaces in the site. The second model, informed by the site and context was meant to resemble the integration of new and old seen throughout the site. The third model, informed by symbolism of police enforcement, is meant to show how the police is an invisible force meant to keep the chaos that my occur in communities contained. The final model explores how typical symbols of police enforcement can be used to separate spaces.

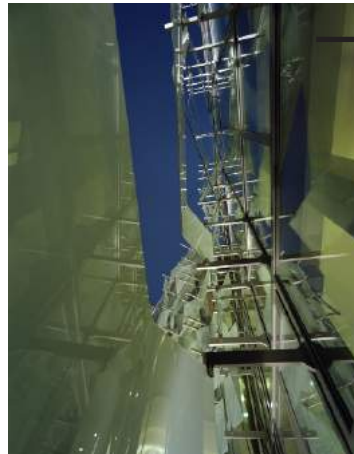




Map showing program types in Roslyn



Recycled rubber floors help to ease the impact of a long day on the job for officers.



Bulletproof curtain wall is used behind the decorative glass to further the idea of transparency while still allowing protection in the case of an emergency.

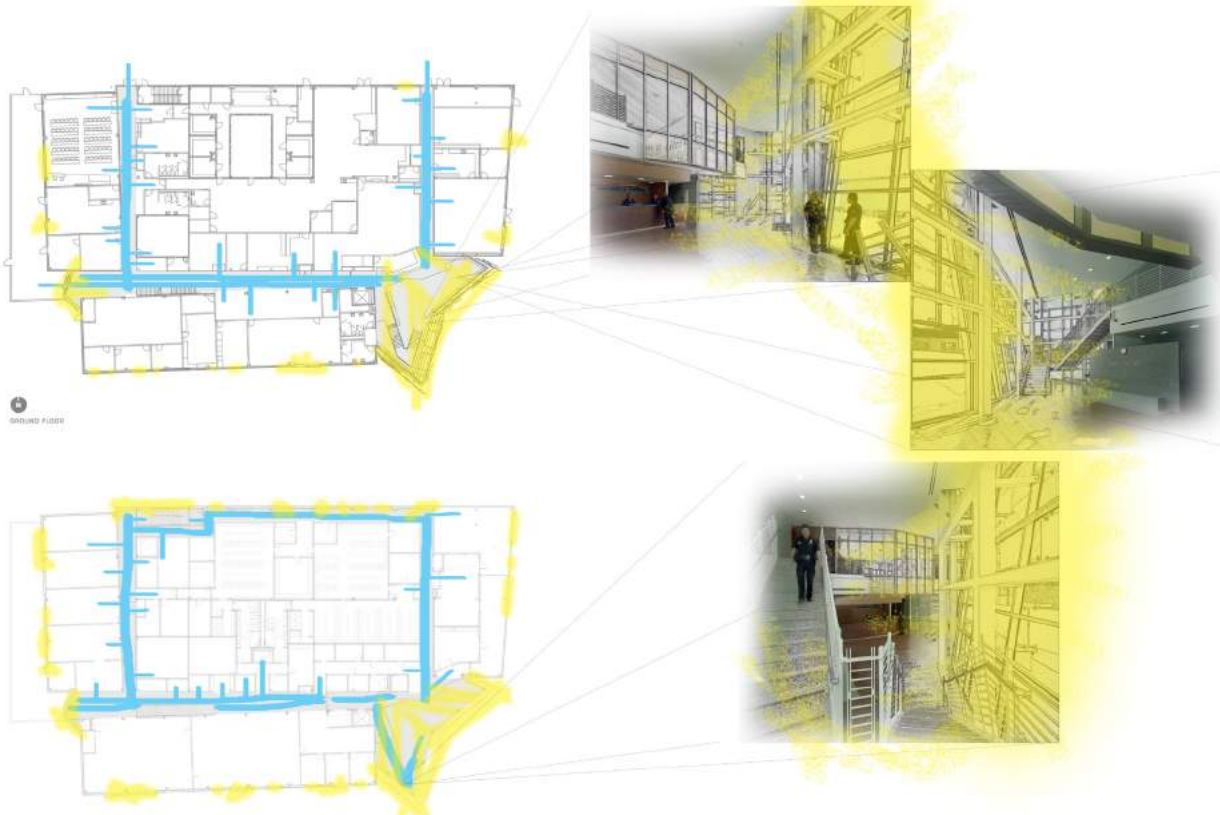
Site Analysis (Left)

Roslyn is a fairly small town in Long Island, NY. It is a historic town and features many historic styles. The town is very quiet and serene and lends itself more to nature as the entire town is surrounded within vegetation.

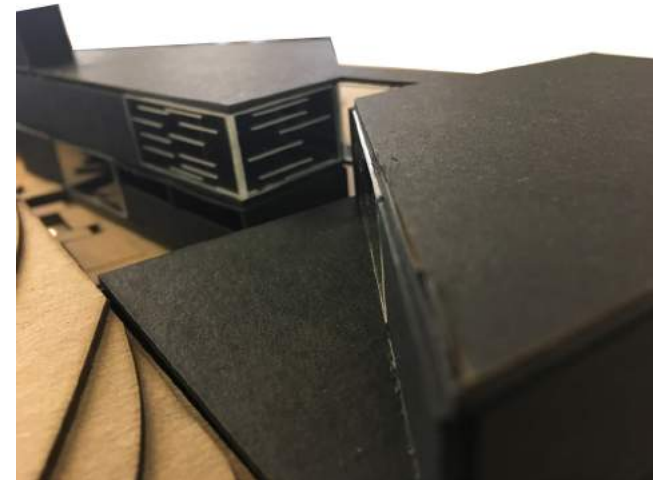
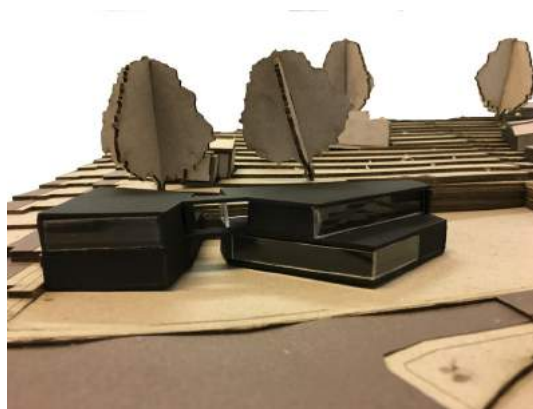
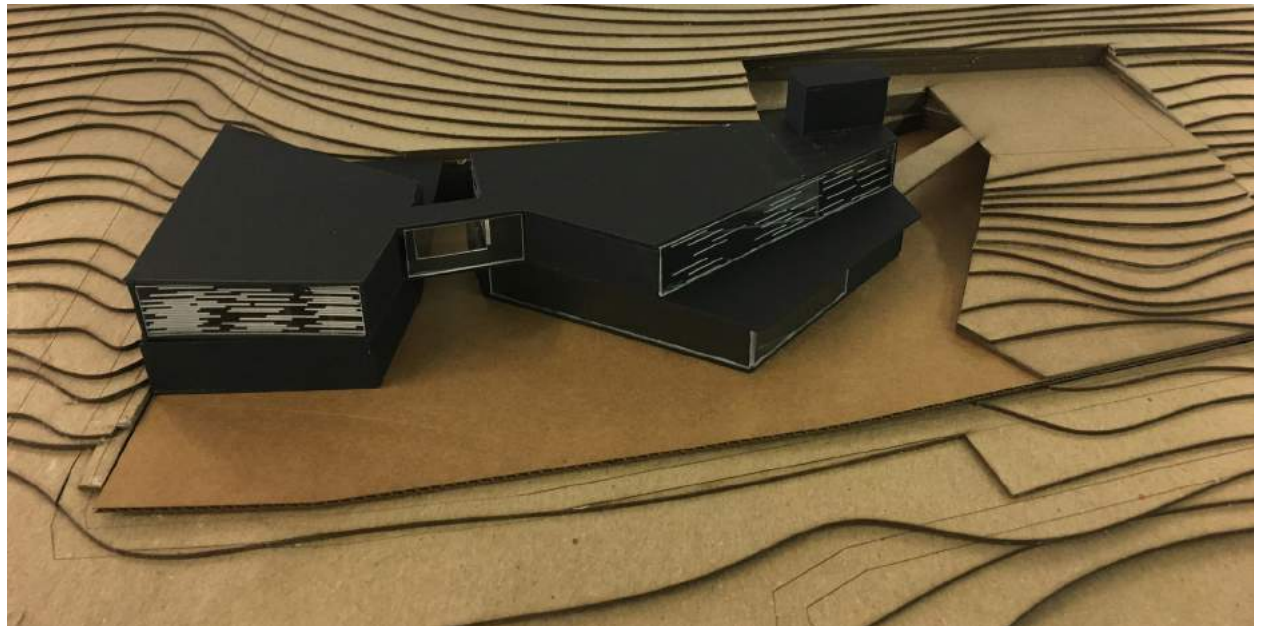
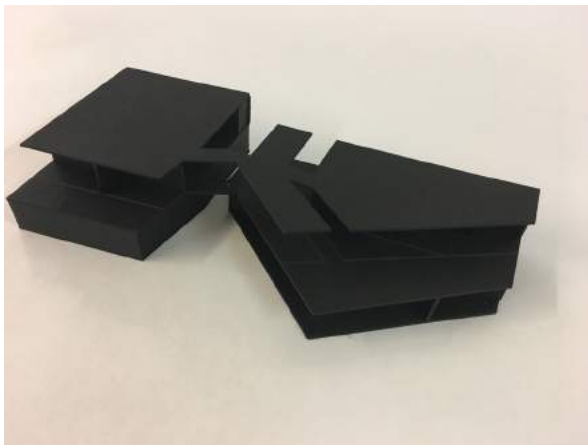
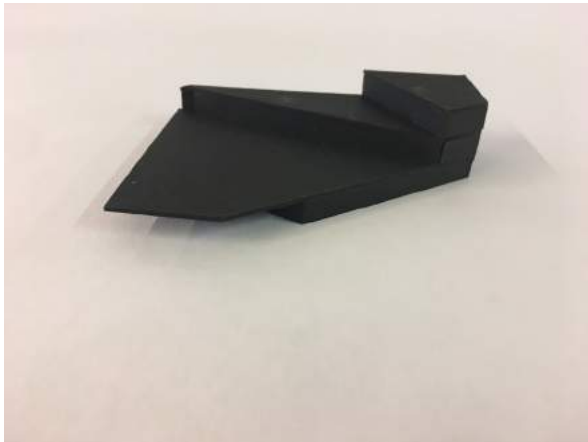
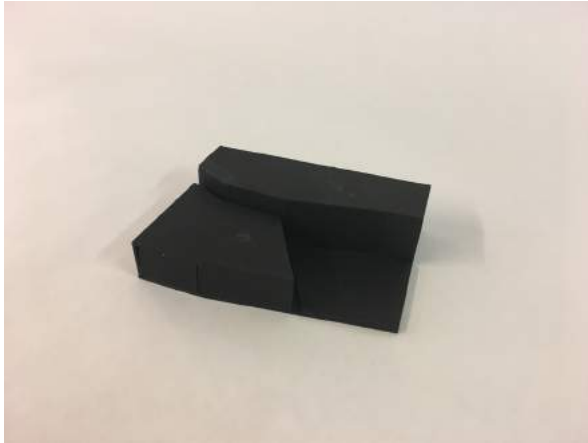
Precedent Study - Hollenbeck Police Station (Right)

The Hollenbeck Police Station is located in Los Angeles, CA, completed by AC Martin in 2009. One of the main goals in this project was to create a relationship between the community and the police through the use of transparency and encouraging the community to socialize with the police. The station features a public plaza which allows for the community to come and interact with the police in a social setting. The station also features a glass facade at the entrance that features both regular glazing and frosted glazing to allow natural light into the building and some transparency, while still maintaining a certain level of privacy.

ORGANIZATION:



Analysis of the material used (top; my work) and station and organization (bottom; partner work).

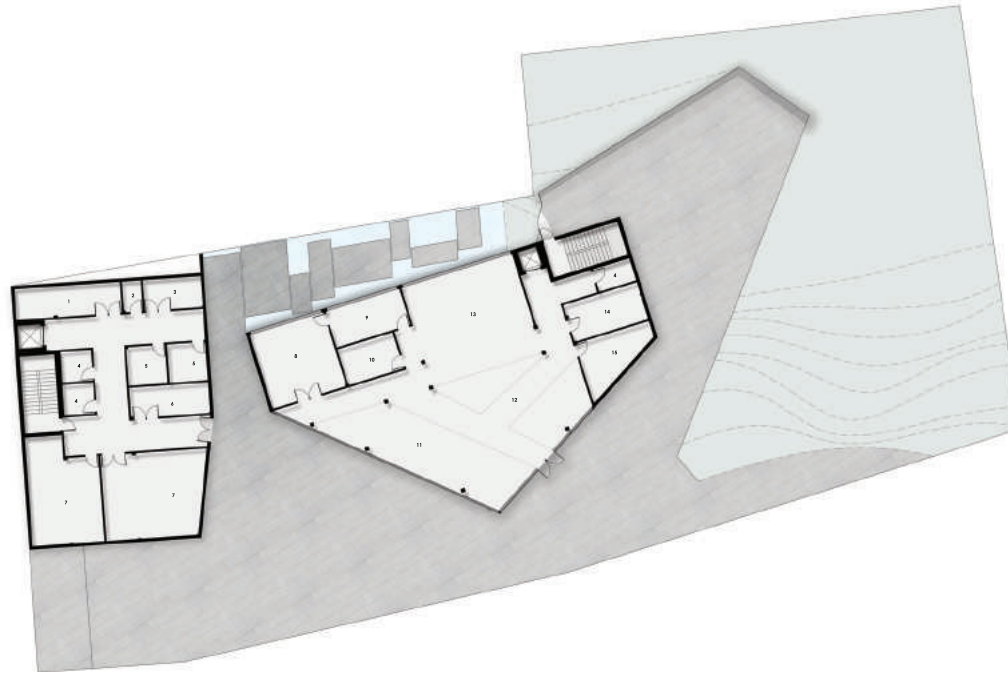


Study Models (Left), Final Model (Right)



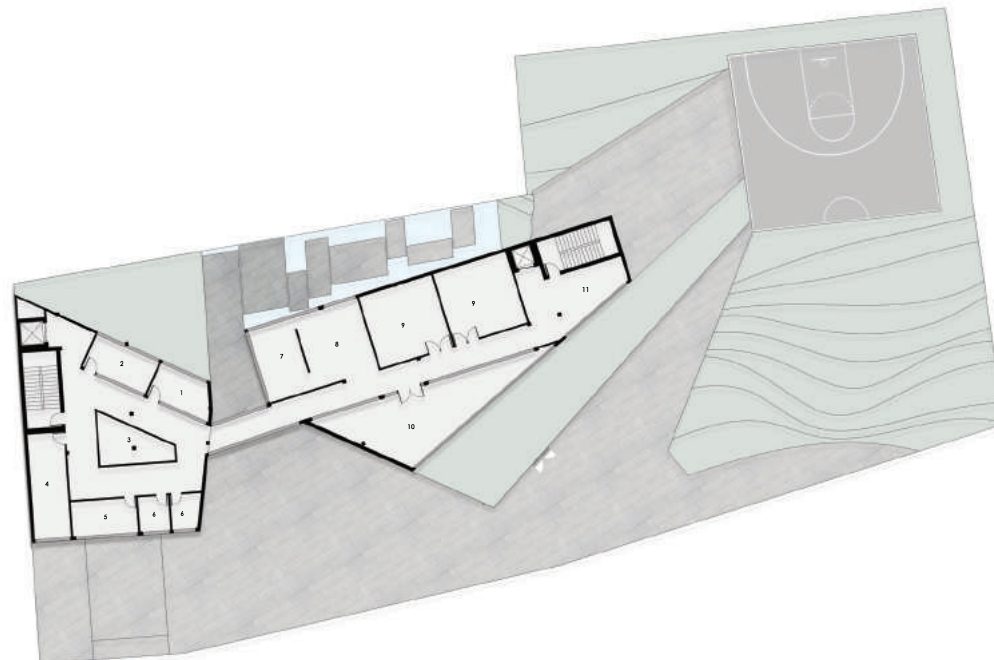
The Police Station

My project is about the rotation of a chosen axis in the site to promote interactions between the police and the community. The building is oriented in a way to open up interaction spaces and to allow maximum sun light to enter the building. Each floor offers a different type of interaction, with the meditation garden in the back, the seating area in the park and the combined community room and lobby in the main building. The top floor offers active interactions with a shared gym and cafe for the community and the police and an outdoor basketball court.



KEY:

- 1. MEN'S DAY ROOM
- 2. WOMEN'S DAY ROOM
- 3. ISOLATION CELL
- 4. MEN'S HOLDING CELL
- 5. WOMEN'S HOLDING CELL
- 6. JUVENILE HOLDING CELLS
- 7. LOUNGE / LUNCH ROOM
- 8. DETECTIVE WORK / CUBICLE STATION
- 9. LOCKER ROOMS
- 10. GYM
- 11. CAFE AREA

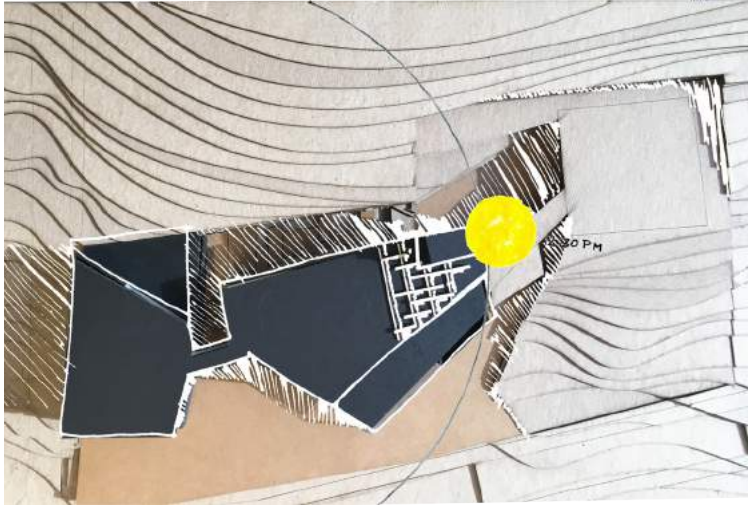


KEY:

- 1. KITCHEN
- 2. STORAGE
- 3. BEDDING STORAGE AND LAUNDRY
- 4. BATHROOM
- 5. INTERROGATION ROOM
- 6. PRISONER VISITING ROOM
- 7. BUILDING SERVICES / STORAGE
- 8. COURT ROOM / CONFERENCE ROOM
- 9. VISITING JUDGE'S OFFICE
- 10. VISITING JUDGES CLERK'S OFFICE
- 11. COMMUNITY AREA
- 12. LOBBY AREA
- 13. STATION STAFF
- 14. CHIEF'S OFFICE
- 15. CHIEF'S ASSISTANT OFFICE

Plans (Top: Ground Floor, Bottom: First Floor)

1

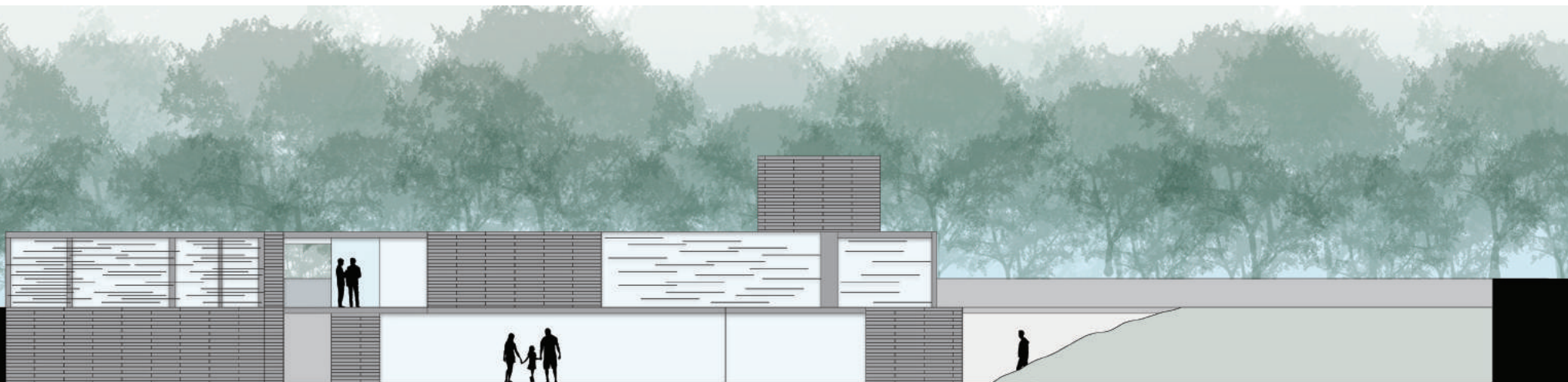


2



1. Sun Diagram showing orientation and need for shading louvers (seen in elevation)

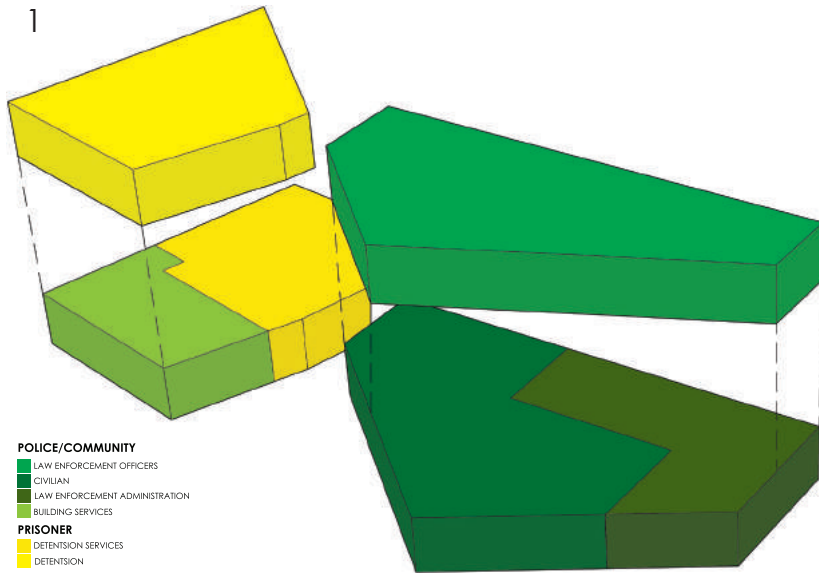
2. Form Diagram showing where each level is orientated towards



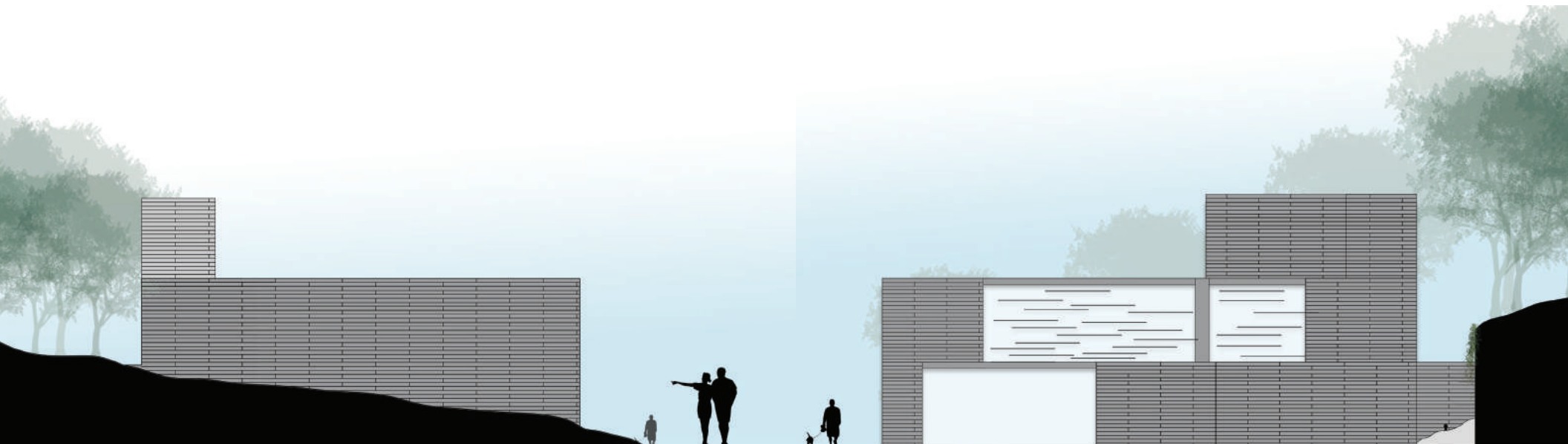
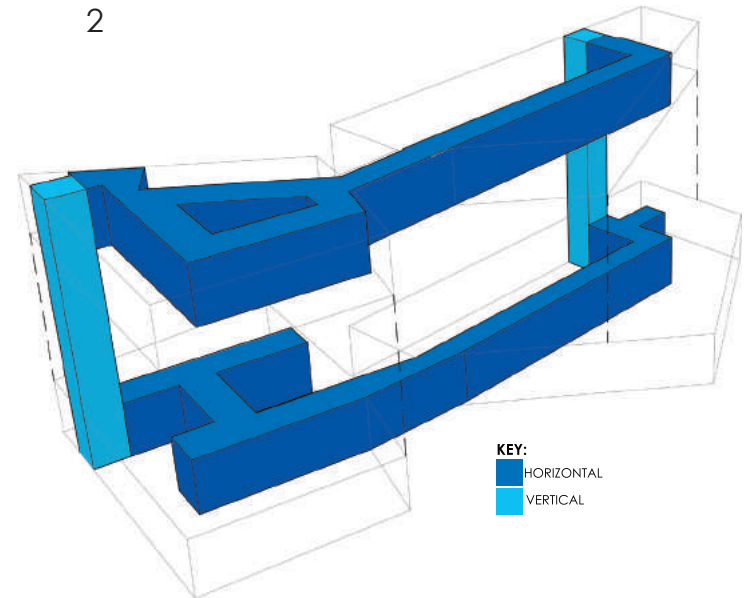
West Elevation

Design 3

1

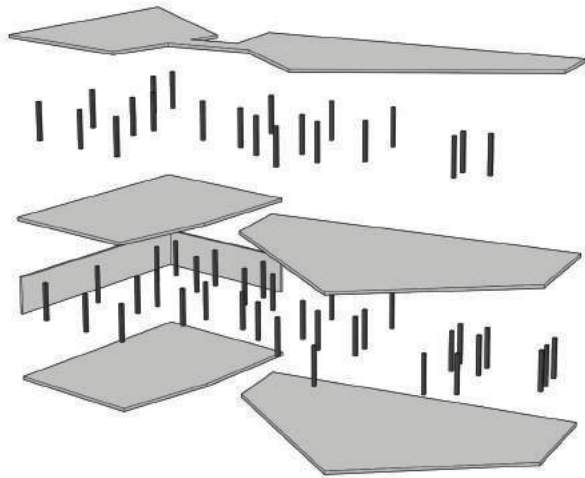


2

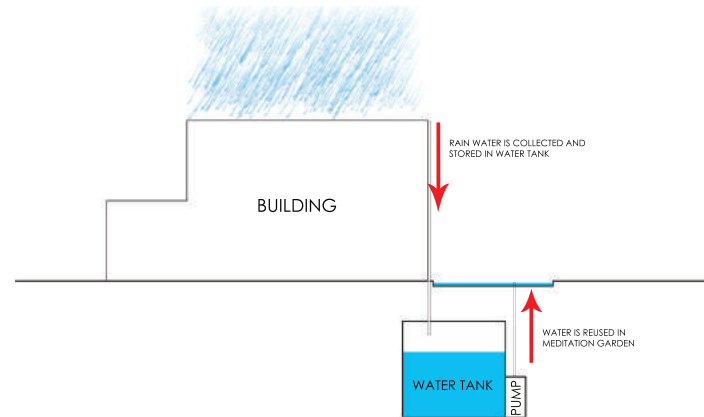


Left to Right: North Elevation, South Elevation

3



4

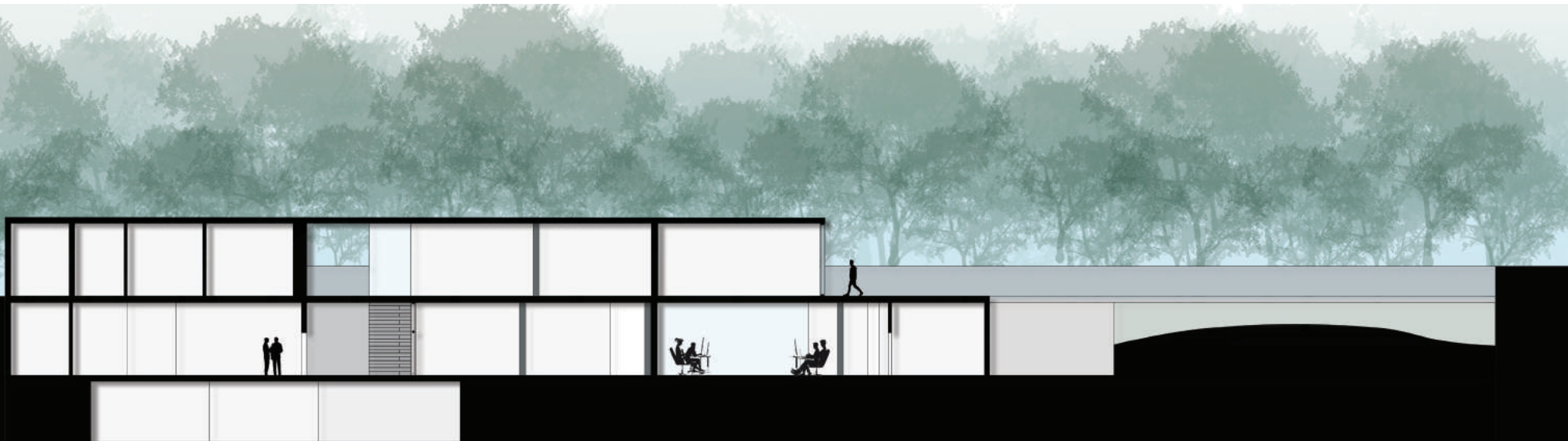


1. Distribution of program

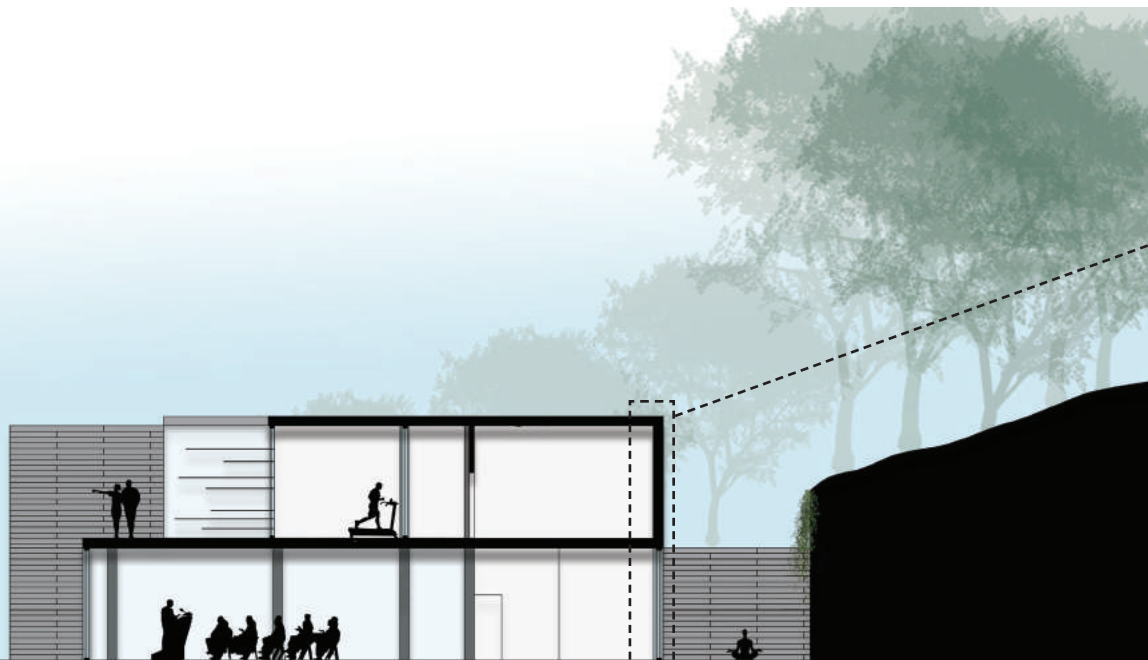
2. Vertical and horizontal circulation

3. Structure: Light gauge steel system

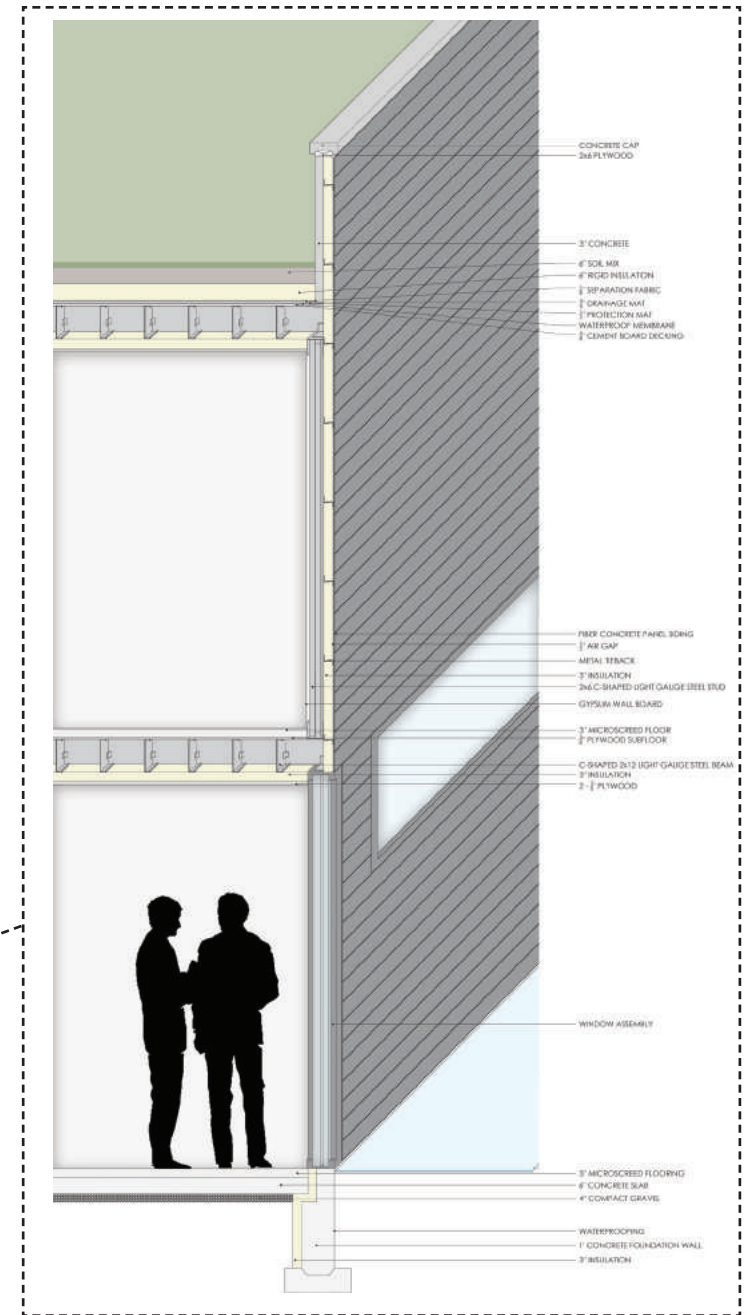
4. Sustainability: Underground rainwater collection system that feeds into the meditation garden

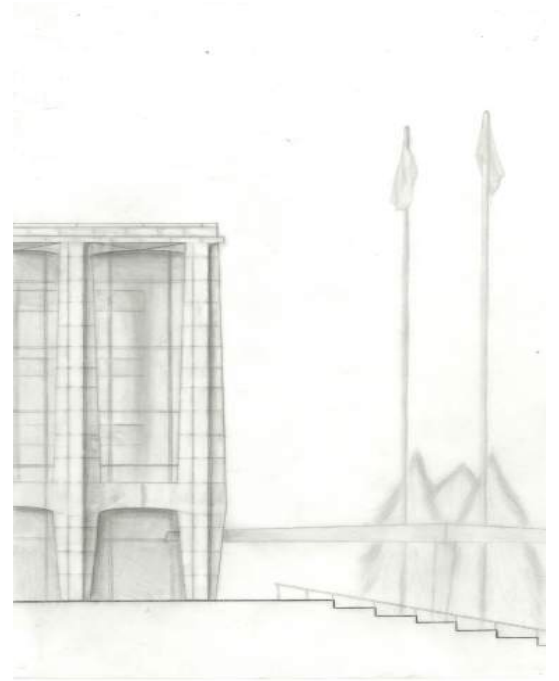
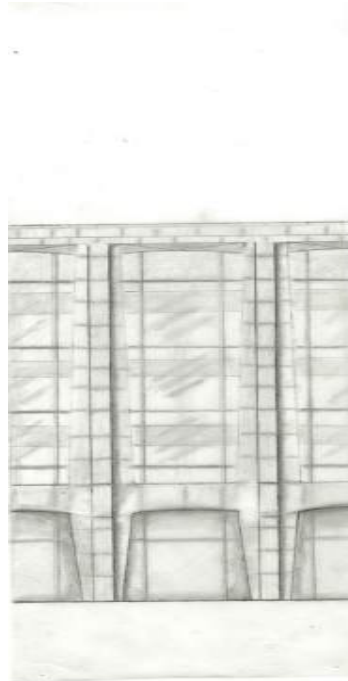
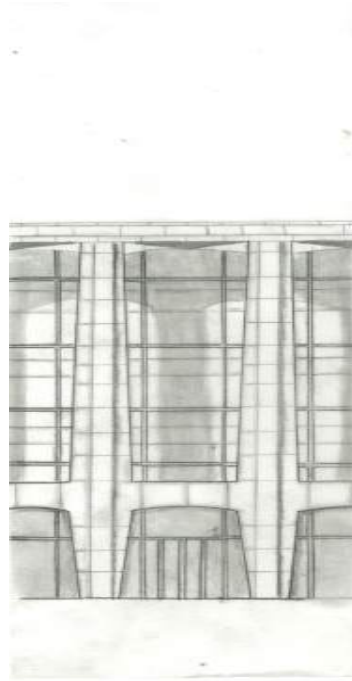


Longitudinal Section



Left to Right: Transverse Section, Wall Detail Axon





Group Elevation, second drawing from left completed by me.

Project B:

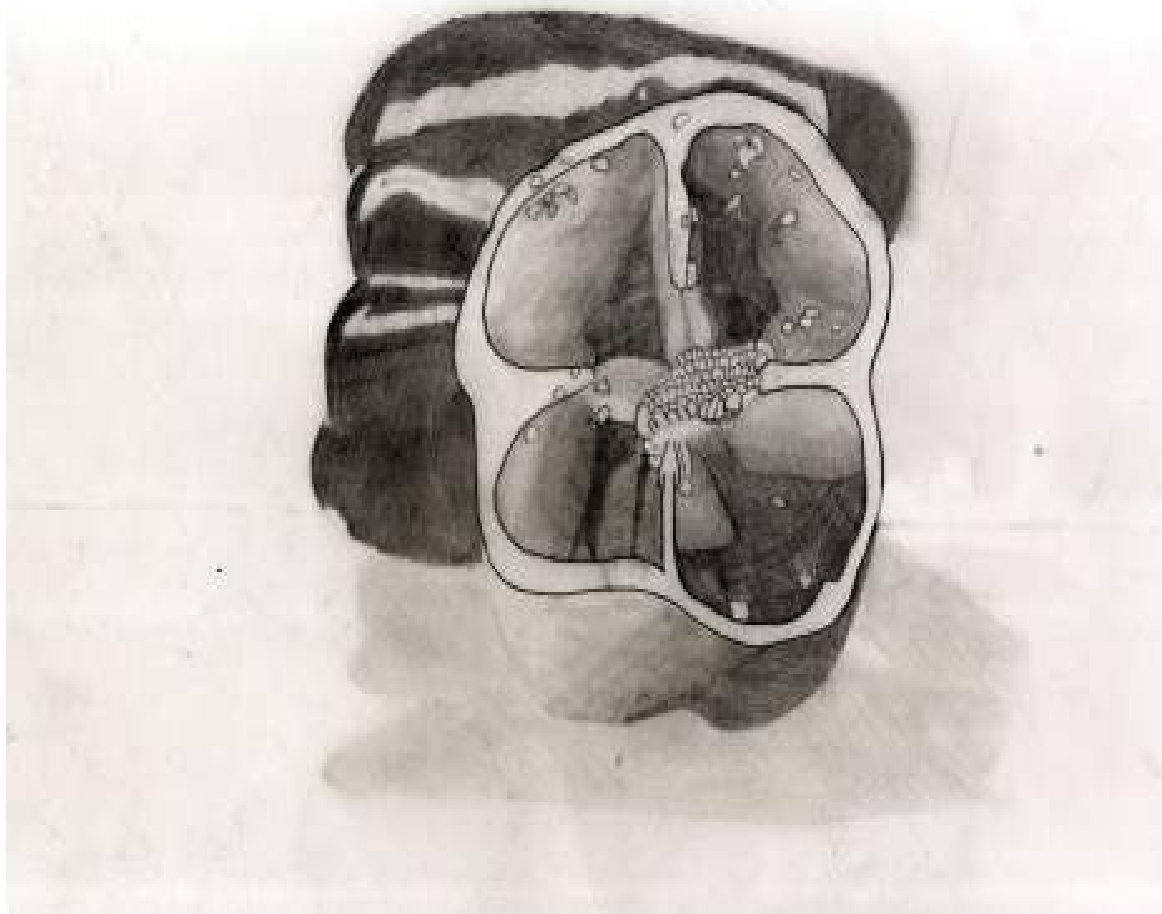
MEASURED
ORTHOGRAPHIC
PROJECTION +
ANAMORPHIC
PERSPECTIVE

Elevation of Lincoln Center (Left)

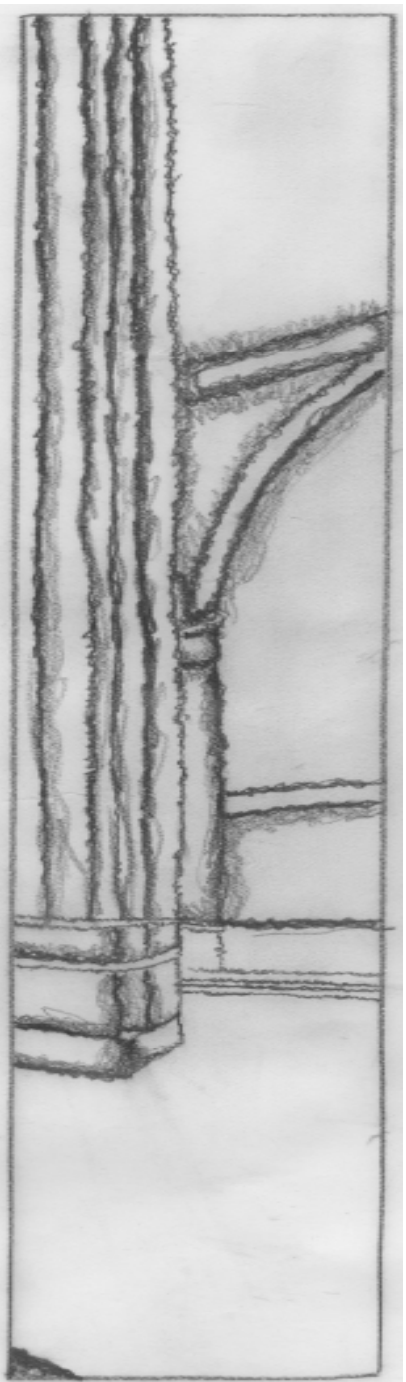
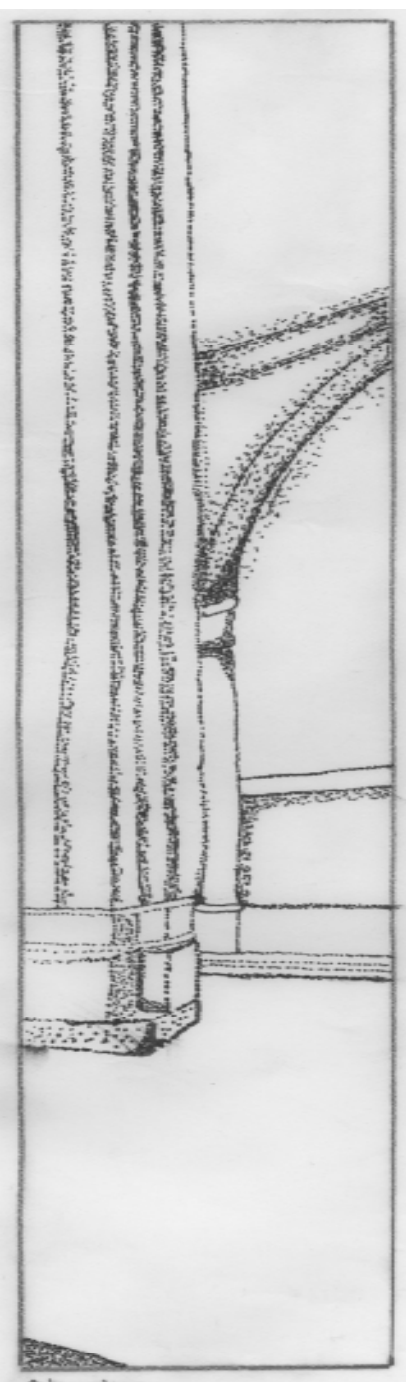
My group was assigned the task to divide and redraw the David H. Koch Building from the Lincoln Center.

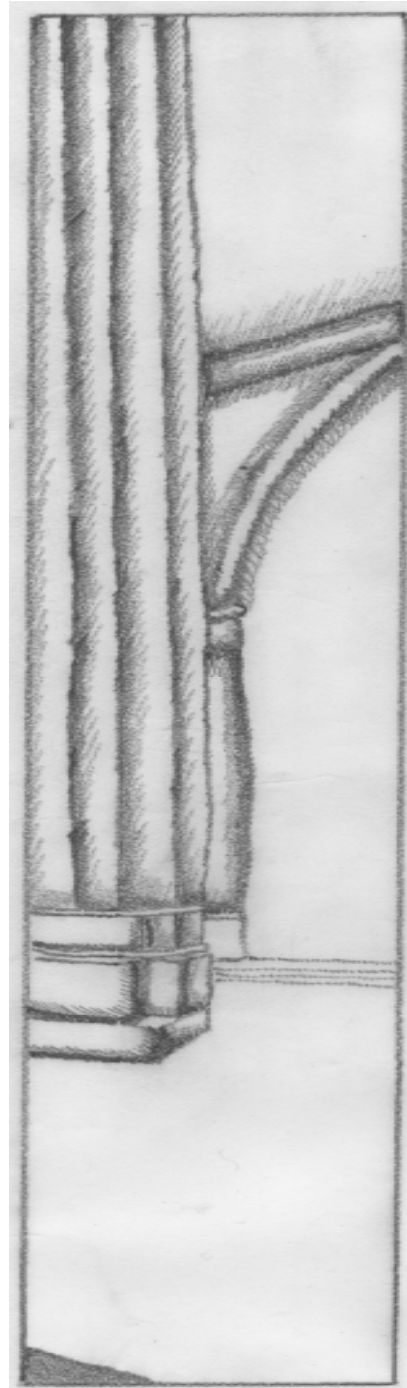
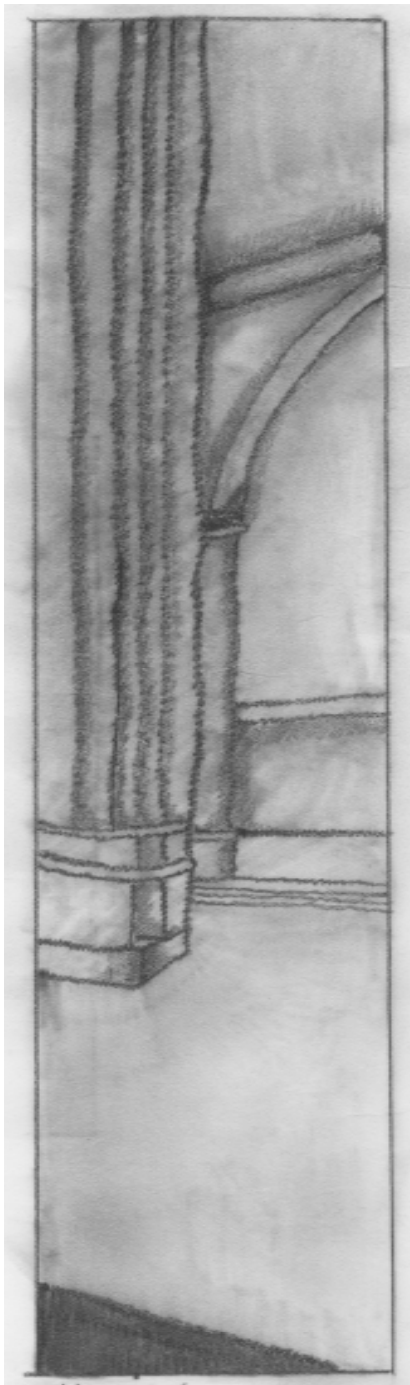
Bell Pepper (Right)

Each student was required to draw a bell pepper exactly as it looked before him or her.



Bell Pepper (hand-drawn)

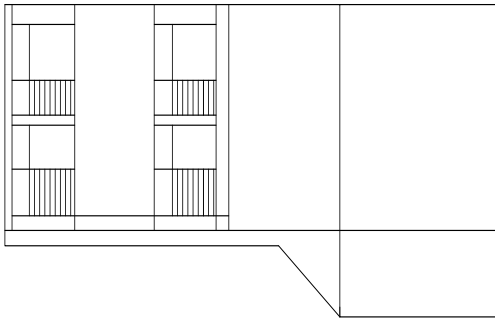
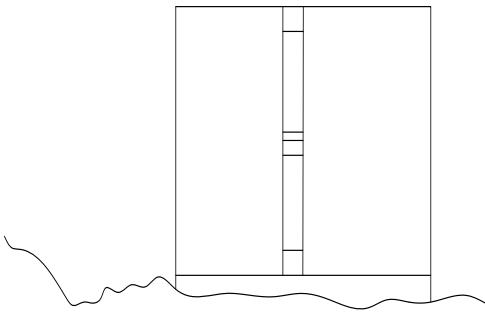
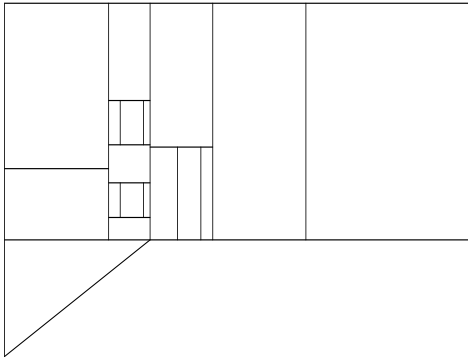




Project C:

PERSPECTIVE
PROJECTION +
RENDERING
TECHNIQUES

Using the four
different drawing styles
discussed in class, we were
assigned to redraw a
selected section of a church
in each style.

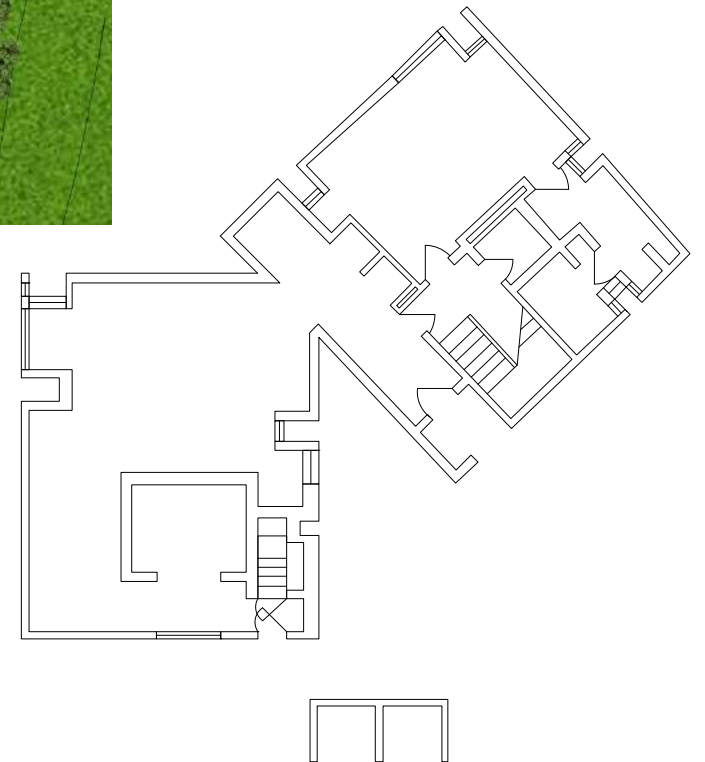


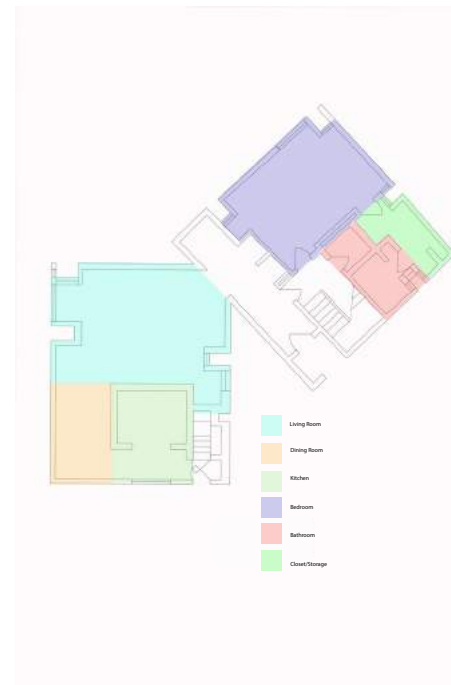
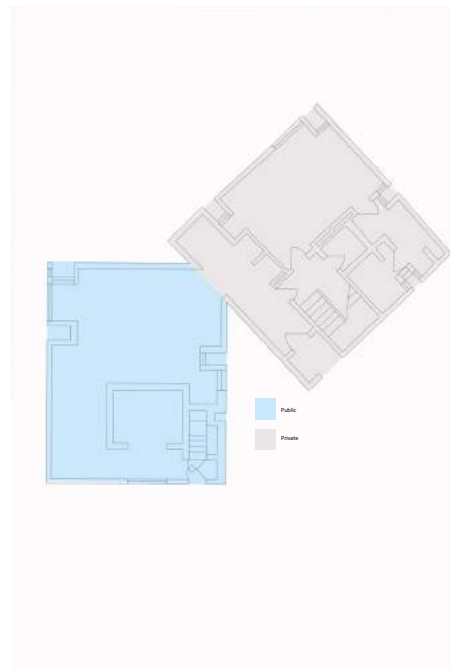
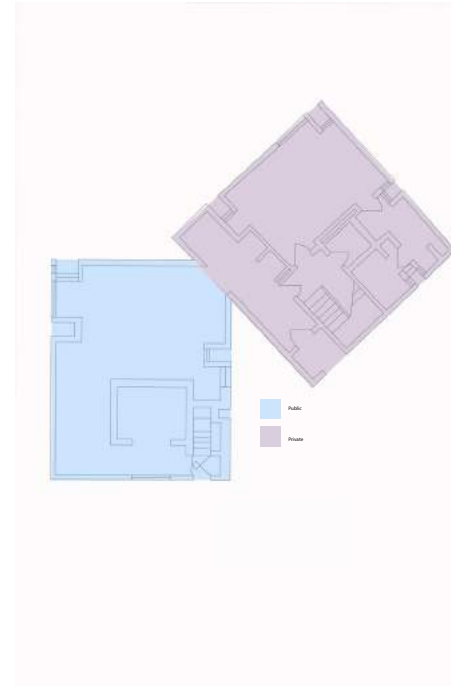
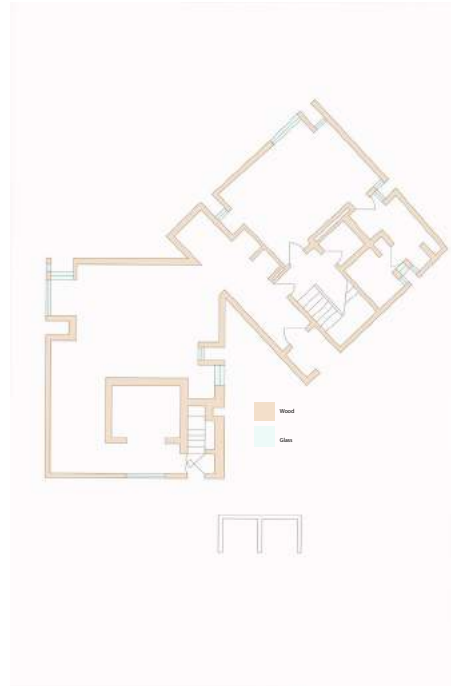
Drawn Elevations (left), and Rendered Elevation (right)

Fischer House

Louis Kahn

I was assigned the
Fischer House by Louis Kahn. I
redrew and
recreated the plans,
elevations, and
diagrams for this project.



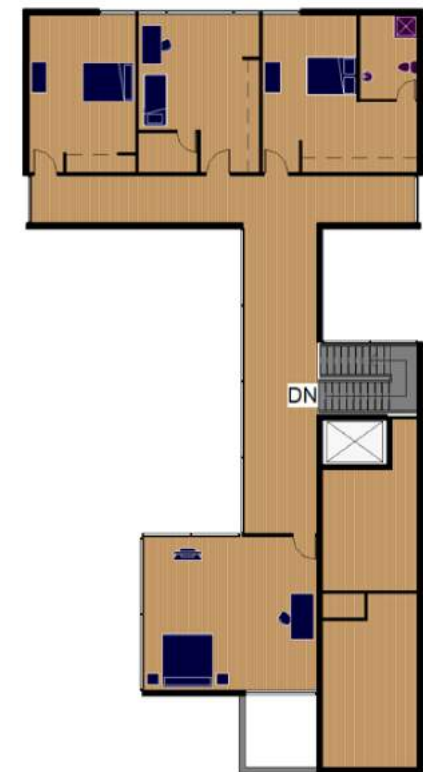
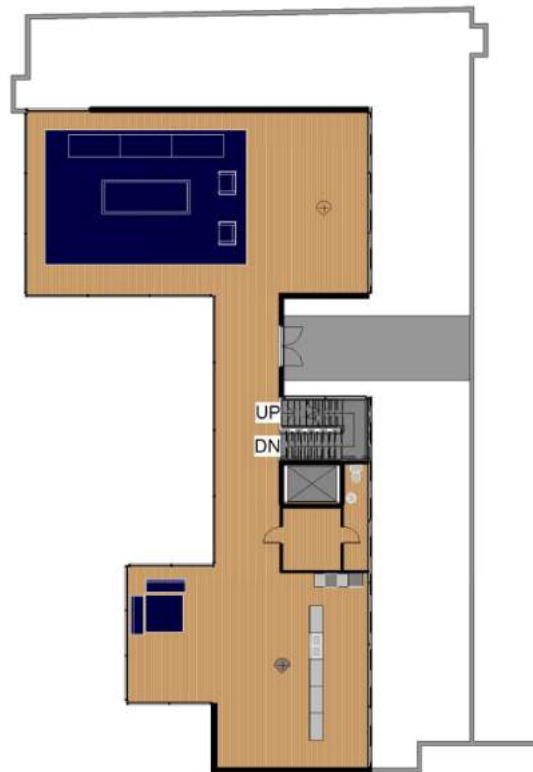
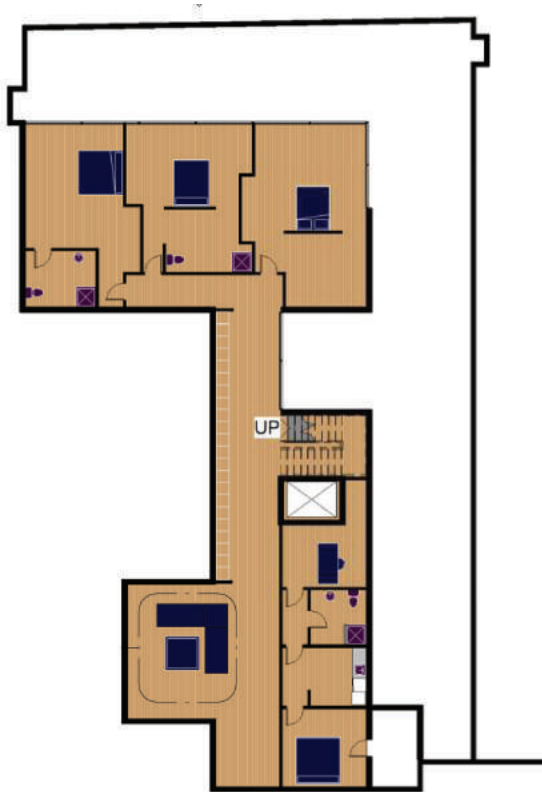


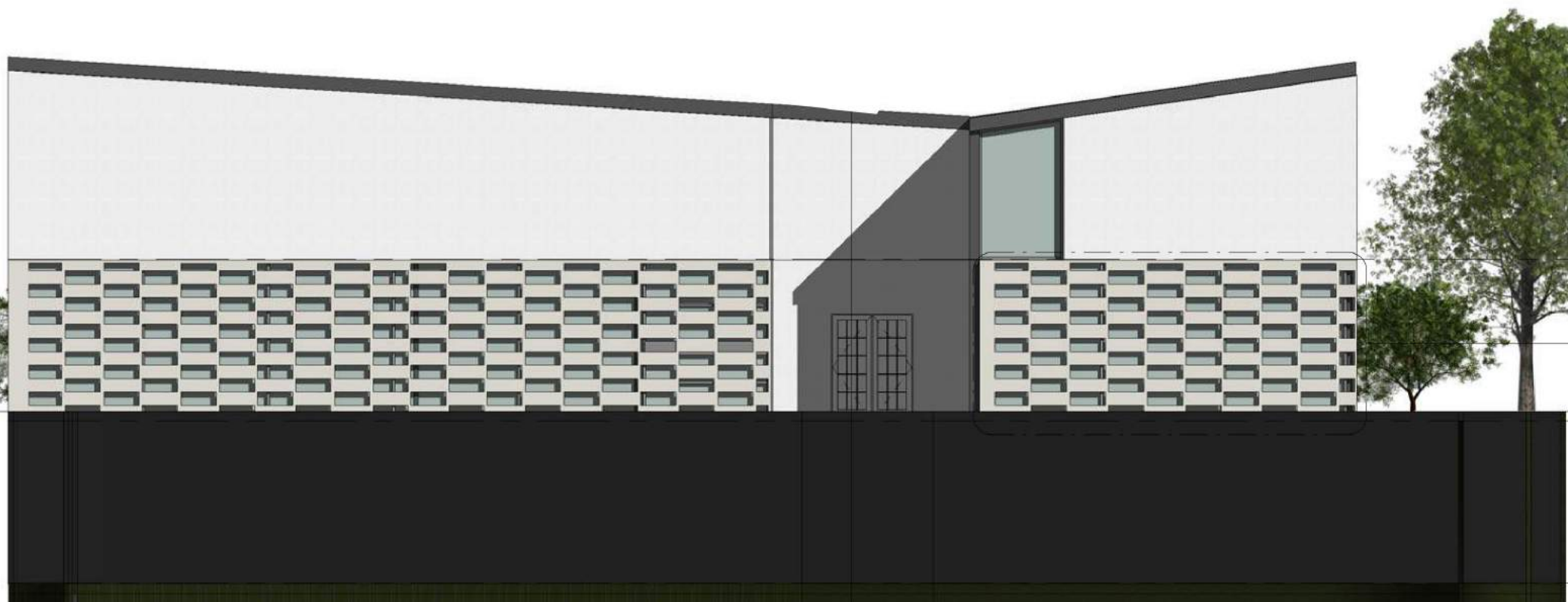


Renderings

J House

Pitsou Kedem
I was assigned the
J House by Pitsou Kedem I
redrew and
recreated the plans,
elevations, and
diagrams for this project all on
Revit, Rhino and
Photoshop.





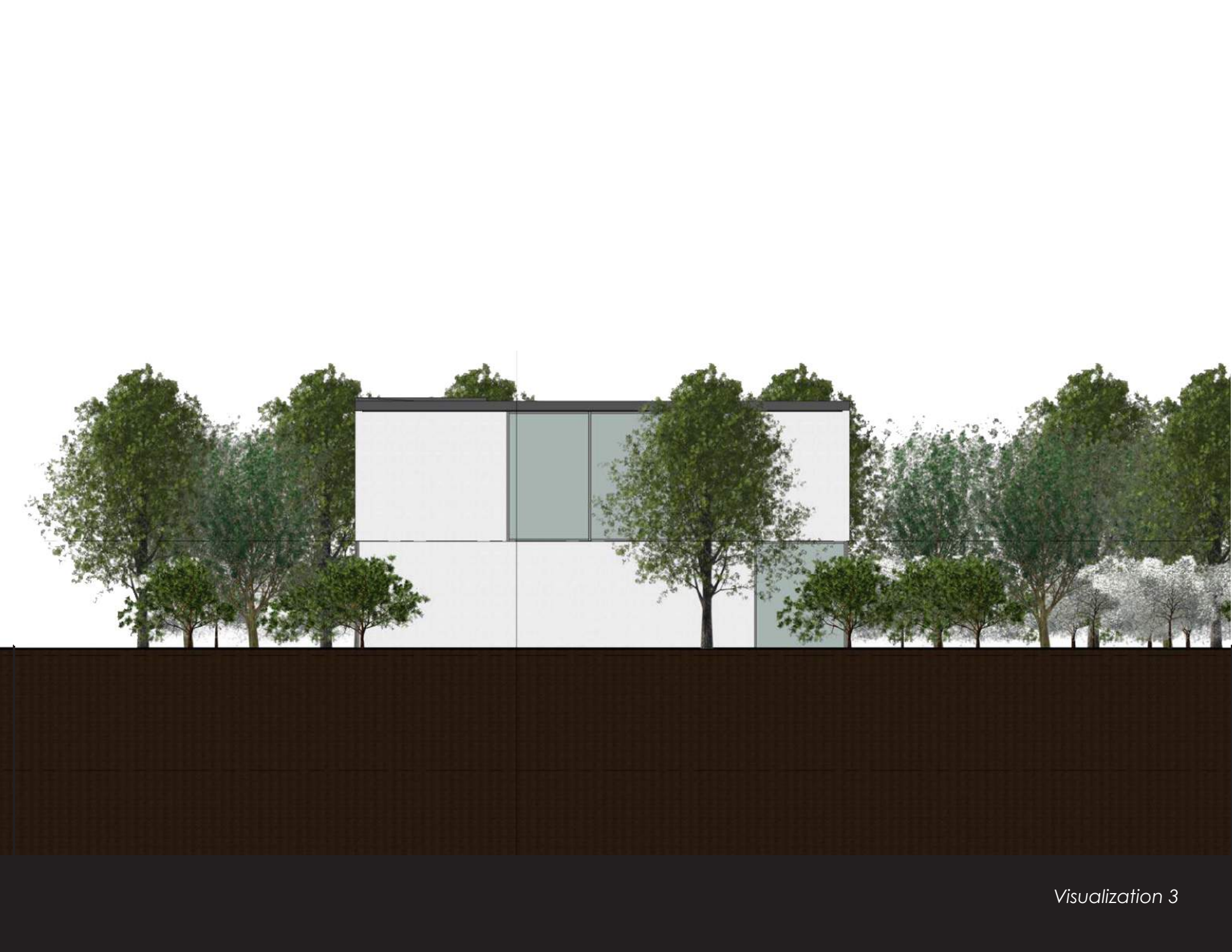
Elevations



Visualization 3



Elevations





Transverse section axon



Longitudinal section axon

